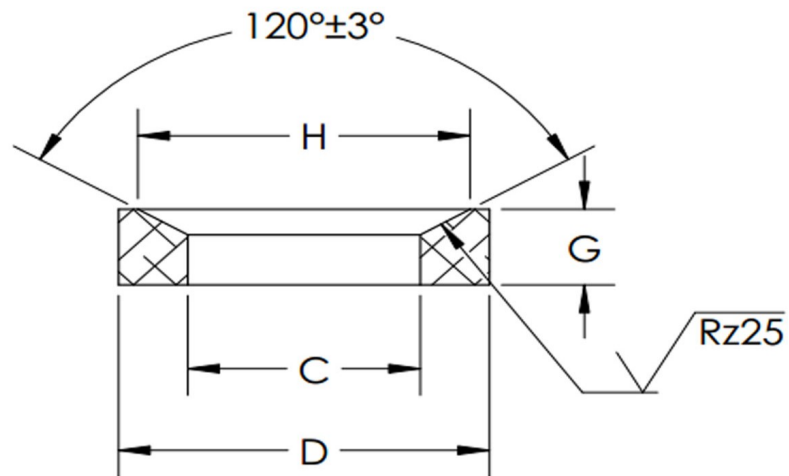


C+/-2	D+/-2	H+/-2	G+/-1	Screw Size
7.100	17	11	4	M6



SEASTROM MANUFACTURING CO., INC.
 456 SEASTROM STREET
 TWIN FALLS, IDAHO 83301
 (208) 737-4300 FAX (208) 734-7222

ALL INFORMATION
 COPYRIGHTED BY
 SEASTROM MFG. ©

PART NO.:	5779-G-M6
PART NAME:	Washers, Conical Seat
MATERIAL:	Cold Rolled Steel
HEAT TREAT:	Please refer to Material & Finish Specifications in Engineering Resources
FINISH:	Through Hardened(350+80)HV30 (All Dimensions Are Prior To Plating)

Dimensions in Millimeters