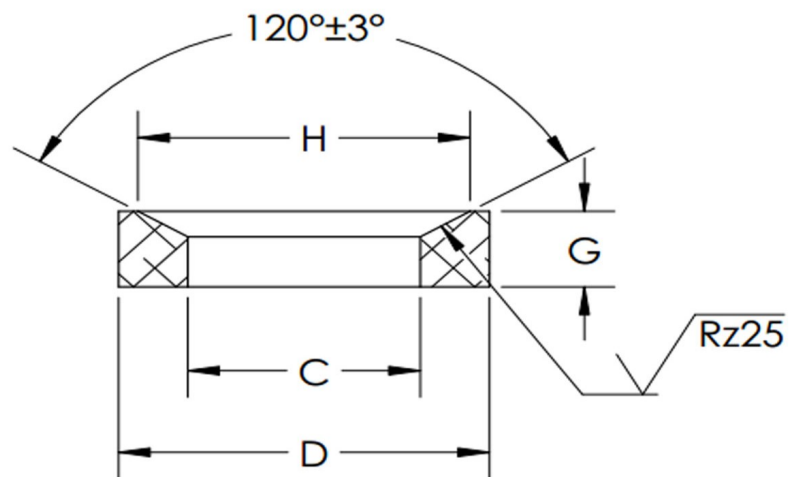


C+/- .2	D+/- .2	H+/- .2	G+/- .1	Screw Size
7.100	12	11	2.800	M6



Dimensions in Millimeters



SEASTROM MANUFACTURING CO., INC.
456 SEASTROM STREET
TWIN FALLS, IDAHO 83301
(208) 737-4300 FAX (208) 734-7222

ALL INFORMATION
COPYRIGHTED BY
SEASTROM MFG. ©

PART NO.: 5779-D-M6

PART NAME: Washers, Conical Seat

MATERIAL: Cold Rolled Steel

HEAT TREAT: Please refer to Material & Finish Specifications in Engineering Resources

FINISH: Case Hardened(550+100)HV10 (All Dimensions Are Prior To Plating)