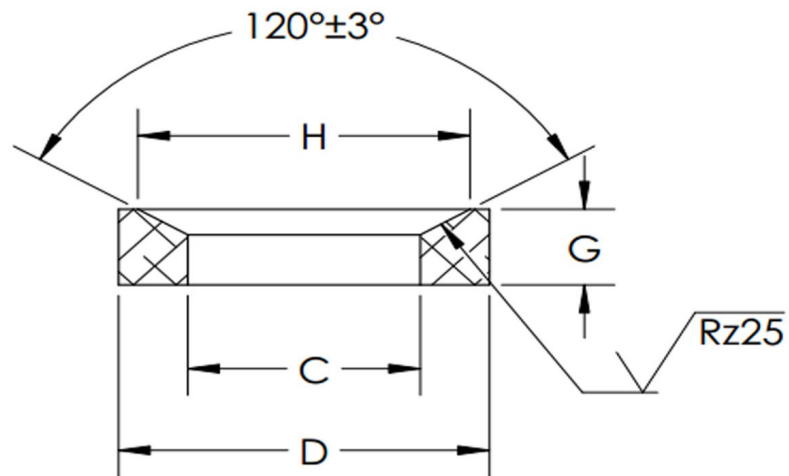


| C+/-0.2 | D+/-0.3 | H+/-0.3 | G+/-0.2 | Screw Size |
|---------|---------|---------|---------|------------|
| 28      | 44      | 37      | 9.500   | M24        |



SEASTROM MANUFACTURING CO., INC.  
 456 SEASTROM STREET  
 TWIN FALLS, IDAHO 83301  
 (208) 737-4300 FAX (208) 734-7222

ALL INFORMATION  
 COPYRIGHTED BY  
 SEASTROM MFG. ©

|                    |   |
|--------------------|---|
| <b>PART NO.:</b>   | 5779-D-M24  |
| <b>PART NAME:</b>  | Washers, Conical Seat   |
| <b>MATERIAL:</b>   | Cold Rolled Steel   |
| <b>HEAT TREAT:</b> | Please refer to Material & Finish Specifications in Engineering Resources |
| <b>FINISH:</b>     | Case Hardened(550+100)HV10 (All Dimensions Are Prior To Plating)          |

Dimensions in Millimeters