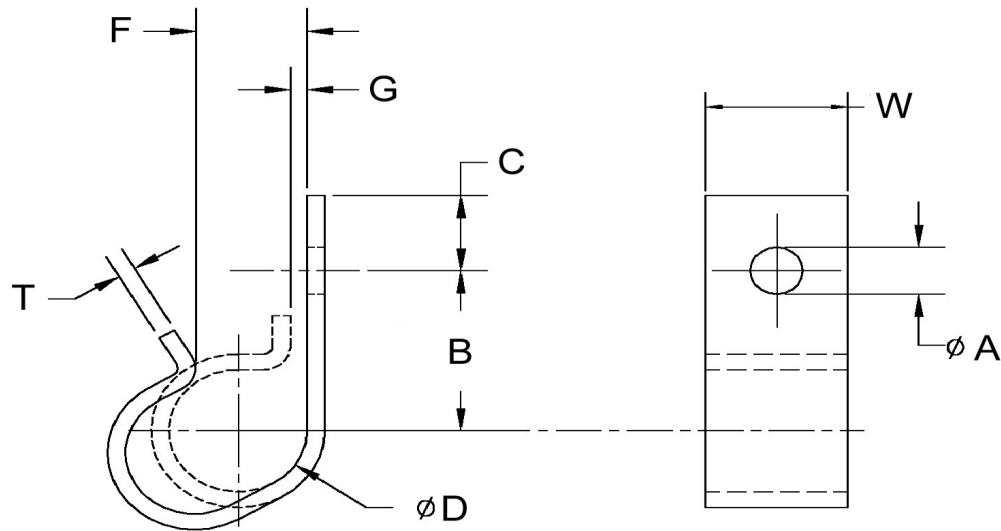


D+/-0.015	A+/-0.005	W+/-0.01	B+/-0.03	C+/-0.01	G+/-0.03	T+/-0.0035	F+/-0.06
0.625	0.206	0.500	1.120	0.219	0.125	0.048	0.470



**NOTE:**

CLAMPS ARE SUPPLIED IN THE OPEN POSITION. B, D & G DIMENSIONS TO BE MEASURED WITH DUMMY COMPONENT IN PLACE AND CLAMP CLOSED.

Dimensions in Inches



SEASTROM MANUFACTURING CO., INC.  
 456 SEASTROM STREET  
 TWIN FALLS, IDAHO 83301  
 (208) 737-4300 FAX (208) 734-7222

ALL INFORMATION  
 COPYRIGHTED BY  
 SEASTROM MFG. ©

<b>PART NO.:</b>	5318-62-3
<b>PART NAME:</b>	Clamps, J Clip
<b>MATERIAL:</b>	Stainless Steel
<b>HEAT TREAT:</b>	Please refer to Material & Finish Specifications in Engineering Resources
<b>FINISH:</b>	None