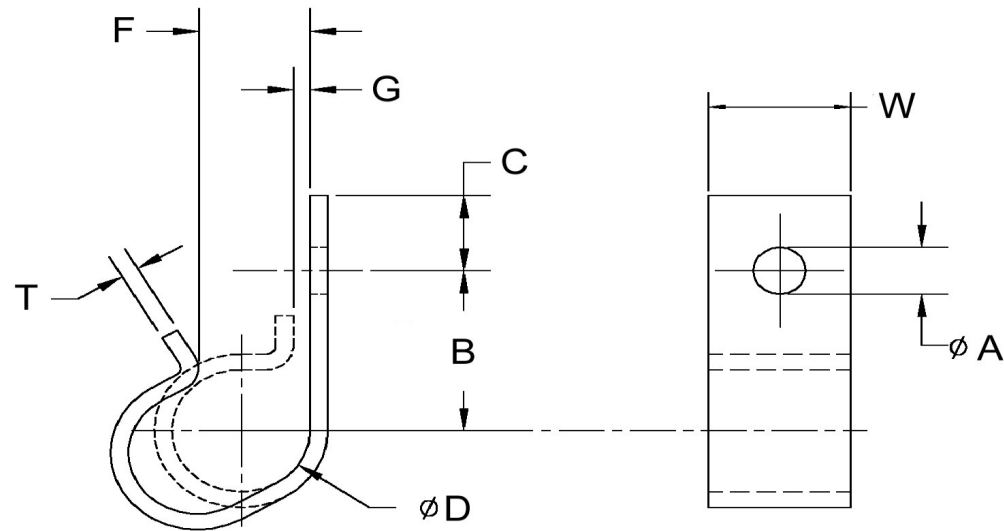


D+/- .015	A+/- .005	W+/- .01	B+/- .03	C+/- .01	G+/- .03	T+/- .004	F+/- .06
0.500	0.206	0.500	1	0.219	0.125	0.048	0.380



NOTE:

CLAMPS ARE SUPPLIED IN THE OPEN POSITION. B, D & G DIMENSIONS TO BE MEASURED WITH DUMMY COMPONENT IN PLACE AND CLAMP CLOSED.

Dimensions in Inches



SEASTROM MANUFACTURING CO., INC.
456 SEASTROM STREET
TWIN FALLS, IDAHO 83301
(208) 737-4300 FAX (208) 734-7222

ALL INFORMATION
COPYRIGHTED BY
SEASTROM MFG. ©

PART NO.:	5318-50-2
PART NAME:	Clamps, J Clip
MATERIAL:	Cold Rolled Steel
HEAT TREAT:	Please refer to Material & Finish Specifications in Engineering Resources
FINISH:	Zinc Type III or V (All Dimensions Are Prior To Plating)