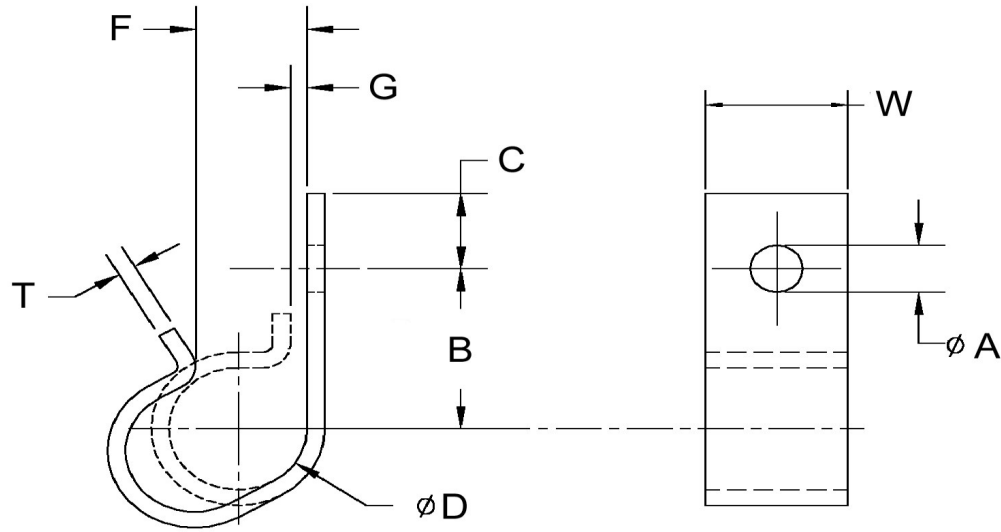


D+/- .015	A+/- .005	W+/- .01	B+/- .03	C+/- .01	G+/- .03	T+/- .003	F+/- .06
0.250	0.184	0.375	0.593	0.219	0.062	0.032	0.180



**NOTE:**

CLAMPS ARE SUPPLIED IN THE OPEN POSITION. B, D & G DIMENSIONS TO BE MEASURED WITH DUMMY COMPONENT IN PLACE AND CLAMP CLOSED.

Dimensions in Inches



SEASTROM MANUFACTURING CO., INC.  
 456 SEASTROM STREET  
 TWIN FALLS, IDAHO 83301  
 (208) 737-4300 FAX (208) 734-7222

ALL INFORMATION  
 COPYRIGHTED BY  
 SEASTROM MFG. ©

<b>PART NO.:</b>	5318-25-2
<b>PART NAME:</b>	Clamps, J Clip
<b>MATERIAL:</b>	Cold Rolled Steel
<b>HEAT TREAT:</b>	Please refer to Material & Finish Specifications in Engineering Resources
<b>FINISH:</b>	Zinc Type III or V (All Dimensions Are Prior To Plating)