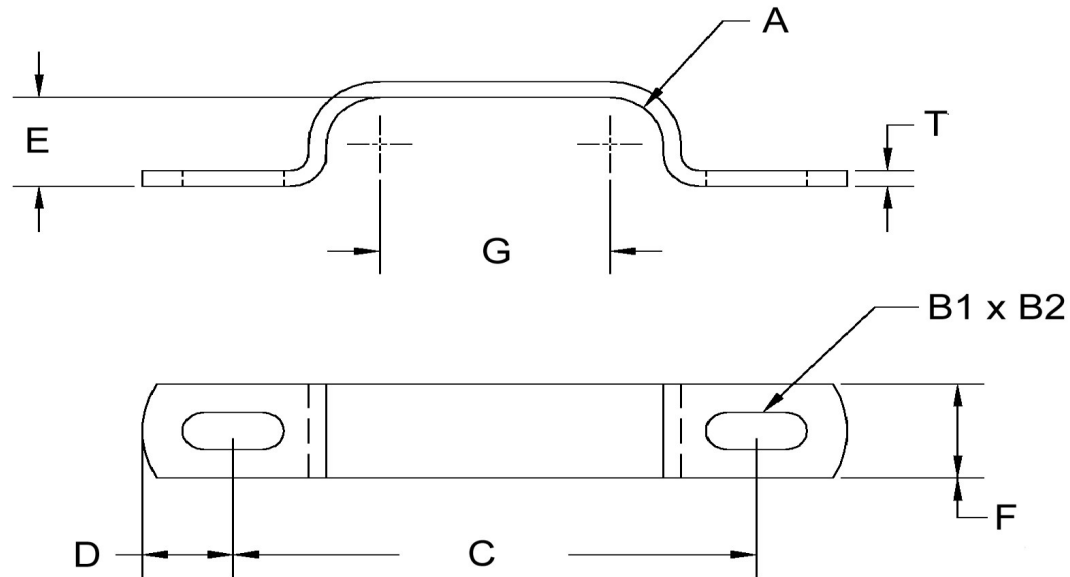


| A (Rad)+/-0.01 | B1+/-0.005 | B2+/-0.005 | C | D+/-0.01 | E+/-0.02 | F+/-0.01 | G+/-0.016 | T+/-0.003 |
|----------------|------------|------------|-------|----------|----------|----------|-----------|-----------|
| 0.594 | 0.265 | 0.346 | 4.309 | 0.290 | 1.187 | 0.500 | 2.372 | 0.060 |



SEASTROM MANUFACTURING CO., INC.
 456 SEASTROM STREET
 TWIN FALLS, IDAHO 83301
 (208) 737-4300 FAX (208) 734-7222

ALL INFORMATION
 COPYRIGHTED BY
 SEASTROM MFG. ©

| | |
|--------------------|---|
| PART NO.: | 5310-32 |
| PART NAME: | Clamps, Retaining |
| MATERIAL: | Cold Rolled Steel |
| HEAT TREAT: | Please refer to Material & Finish Specifications in Engineering Resources |
| FINISH: | None |

Dimensions in Inches