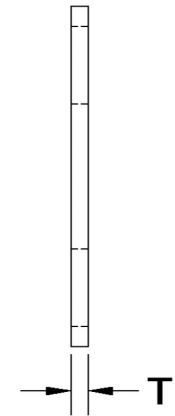
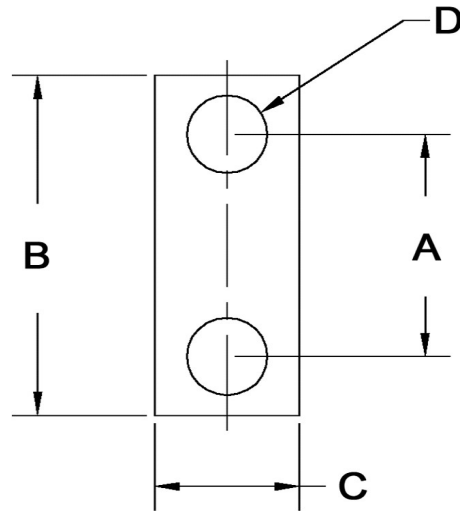


D (Hole Dia)	A+/- .005	B+/- .01	C+/- .01	T+/- .003	Screw Size
0.180	1	1.281	0.281	0.030	8



Dimensions in Inches



SEASTROM MANUFACTURING CO., INC.
 456 SEASTROM STREET
 TWIN FALLS, IDAHO 83301
 (208) 737-4300 FAX (208) 734-7222

ALL INFORMATION
 COPYRIGHTED BY
 SEASTROM MFG. ©

PART NO.:	4805-24-1-Z2
PART NAME:	Straps, Ground
MATERIAL:	Cold Rolled Steel
HEAT TREAT:	Please refer to Material & Finish Specifications in Engineering Resources
FINISH:	Zinc Type II (All Dimensions Are Prior To Plating)