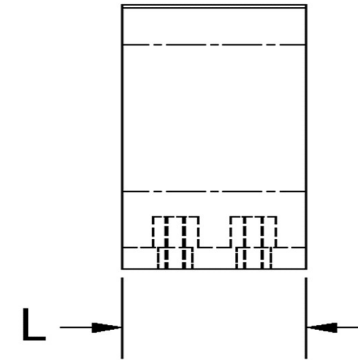
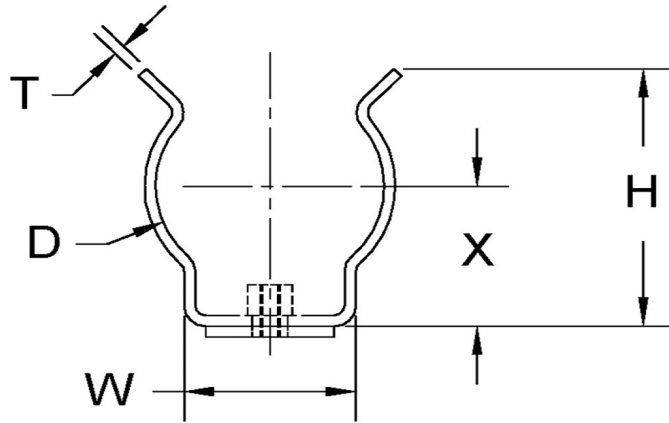
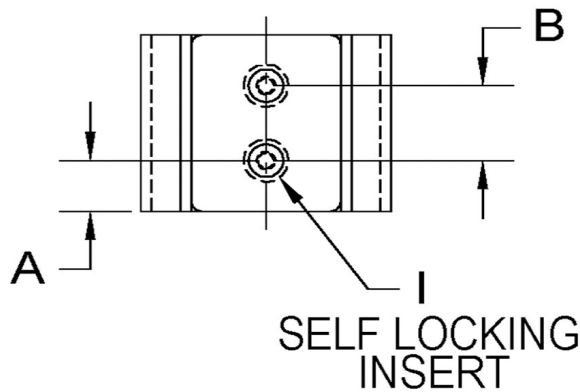


D+/-0.015	L+/-0.01	T (Stk)+/-0.0025	H (Max)	W (Base Max)	X+/-0.02	A+/-0.005	B+/-0.005	I Self Locking Insert
0.875	0.687	0.032	1.210	0.510	0.625	0.188	0.312	4-40



NOTE:

ALL DIMENSIONS ARE TO BE MEASURED WITH THE SPRING CLIP SECURED TO A FLAT SURFACE AND A COMPONENT OF THE NOMINAL DIAMETER IN PLACE.



Dimensions in Inches



SEASTROM MANUFACTURING CO., INC.  
456 SEASTROM STREET  
TWIN FALLS, IDAHO 83301  
(208) 737-4300 FAX (208) 734-7222

ALL INFORMATION  
COPYRIGHTED BY  
SEASTROM MFG. ©

PART NO.: 4543-87-68-1-C2

PART NAME: Spring Clips 31

MATERIAL: Beryllium Copper

HEAT TREAT: Please refer to Material & Finish Specifications in Engineering Resources

FINISH: Cadmium Type II (All Dimensions Are Prior To Plating)