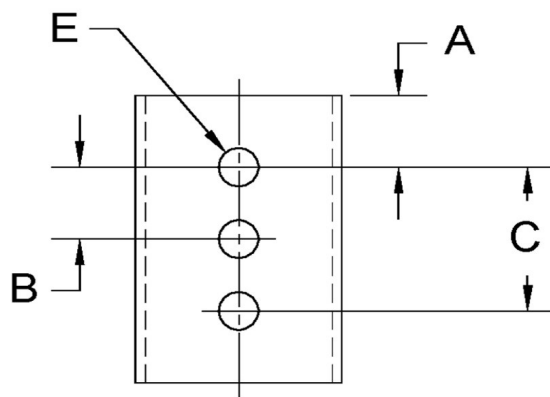
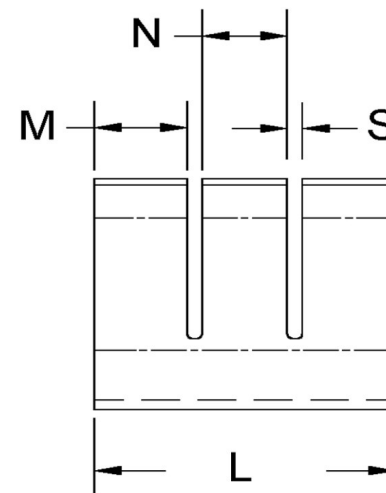
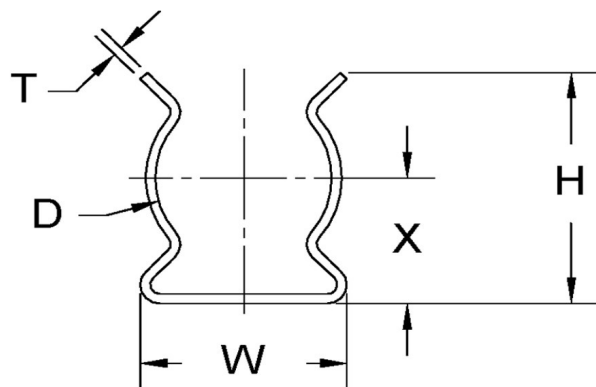


| D+/-0.015 | L+/-0.01 | T (Stk)+/-0.002 | H (Max) | W (Base Max) | X+/-0.02 | E+/-0.003 | A+/-0.005 | B+/-0.005 | C+/-0.005 | M+/-0.03 | N+/-0.03 | S (Ref) |
|-----------|----------|-----------------|---------|--------------|----------|-----------|-----------|-----------|-----------|----------|----------|---------|
| 0.175 | 0.312 | 0.010 | 0.270 | 0.210 | 0.150 | 0.065 | 0.156 | 0 | 0 | 0.080 | 0 | 0.045 |



ALL DIMENSIONS ARE TO BE MEASURED WITH THE SPRING CLIP SECURED TO A FLAT SURFACE AND A COMPONENT OF THE NOMINAL DIAMETER IN PLACE.



SEASTROM MANUFACTURING CO., INC.
456 SEASTROM STREET
TWIN FALLS, IDAHO 83301
(208) 737-4300 FAX (208) 734-7222

ALL INFORMATION
COPYRIGHTED BY
SEASTROM MFG.



PART NO.: 4527-17-31-1-T

PART NAME: Spring Clips 02

MATERIAL: Beryllium Copper

HEAT TREAT: Please refer to Material & Finish Specifications in Engineering Resources

FINISH: Bright Tin (All Dimensions Are Prior To Plating)

Dimensions in Inches