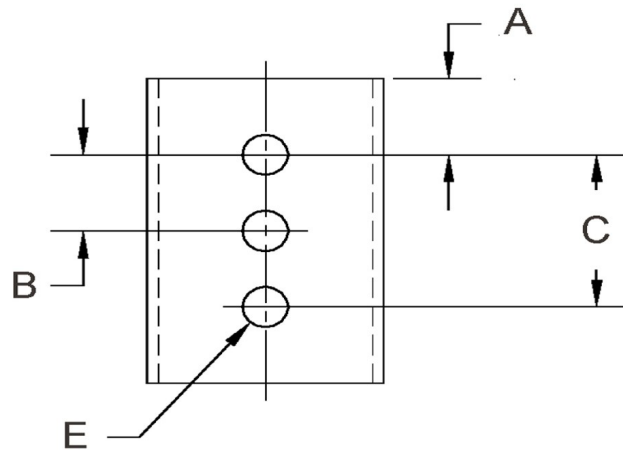
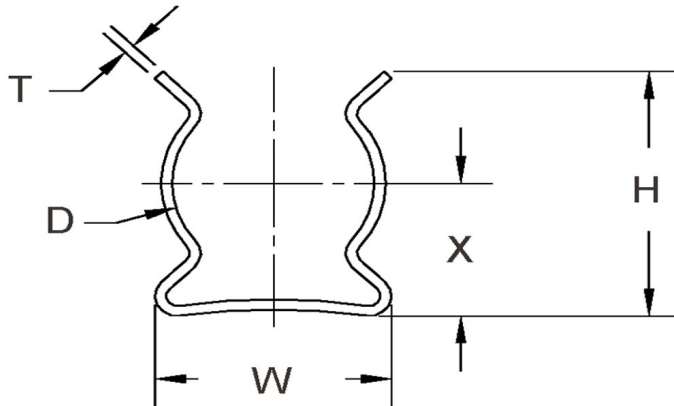


D+/- .015	L+/- .01	T (Stk)+/- .002	H (Max)	W (Base Max)	X+/- .02	E+/- .003	A+/- .005	B+/- .005	C+/- .005	# Of Holes
0.140	0.400	0.010	0.260	0.200	0.129	0.071	0.200	0	0	1



**NOTE:**

ALL DIMENSIONS ARE TO BE MEASURED WITH THE SPRING CLIP SECURED TO A FLAT SURFACE AND A COMPONENT OF THE NOMINAL DIAMETER IN PLACE.



SEASTROM MANUFACTURING CO., INC.  
 456 SEASTROM STREET  
 TWIN FALLS, IDAHO 83301  
 (208) 737-4300 FAX (208) 734-7222

ALL INFORMATION  
 COPYRIGHTED BY  
 SEASTROM MFG. ©

<b>PART NO.:</b>	4521-14-40-1-T
<b>PART NAME:</b>	Spring Clips 01
<b>MATERIAL:</b>	Beryllium Copper
<b>HEAT TREAT:</b>	Please refer to Material & Finish Specifications in Engineering Resources
<b>FINISH:</b>	Bright Tin (All Dimensions Are Prior To Plating)

Dimensions in Inches