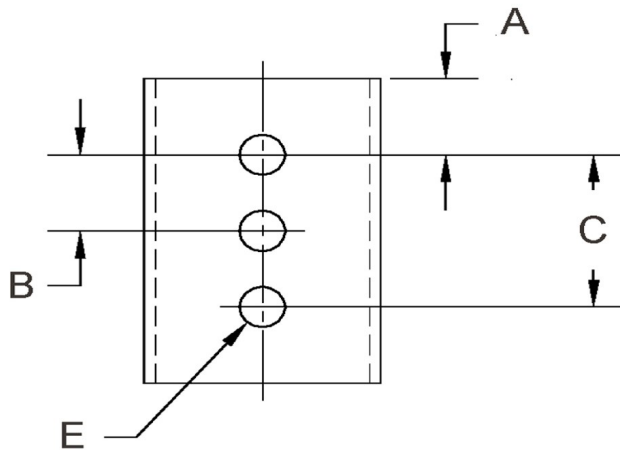
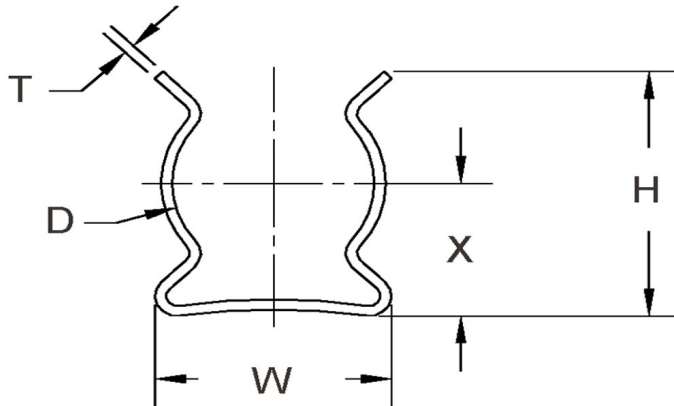


| D+/-0.015 | L+/-0.01 | T (Stk)+/-0.002 | H (Max) | W (Base Max) | X+/-0.02 | E+/-0.003 | A+/-0.005 | B+/-0.005 | C+/-0.005 | # Of Holes |
|-----------|----------|-----------------|---------|--------------|----------|-----------|-----------|-----------|-----------|------------|
| 0.120 | 0.600 | 0.010 | 0.240 | 0.180 | 0.125 | 0.071 | 0.150 | 0.300 | 0 | 2 |



NOTE:

ALL DIMENSIONS ARE TO BE MEASURED WITH THE SPRING CLIP SECURED TO A FLAT SURFACE AND A COMPONENT OF THE NOMINAL DIAMETER IN PLACE.



SEASTROM MANUFACTURING CO., INC.
456 SEASTROM STREET
TWIN FALLS, IDAHO 83301
(208) 737-4300 FAX (208) 734-7222

ALL INFORMATION
COPYRIGHTED BY
SEASTROM MFG. ©

| | |
|--------------------|---|
| PART NO.: | 4521-12-60-1-S |
| PART NAME: | Spring Clips 01 |
| MATERIAL: | Beryllium Copper |
| HEAT TREAT: | Please refer to Material & Finish Specifications in Engineering Resources |
| FINISH: | Silver (All Dimensions Are Prior To Plating) |

Dimensions in Inches