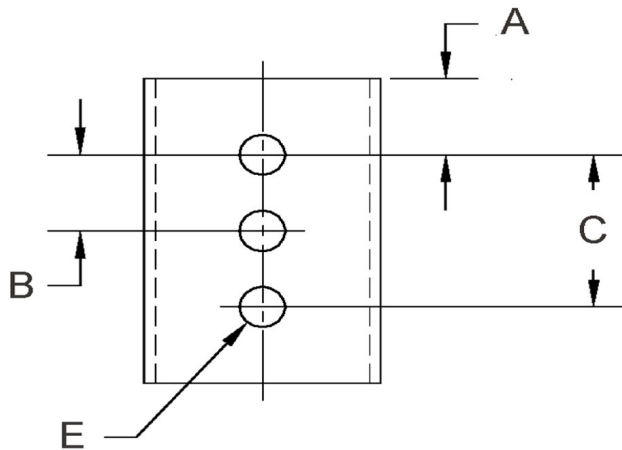


| D+/-0.015 | L+/-0.01 | T (Stk)+/-0.002 | H (Max) | W (Base Max) | X+/-0.02 | E+/-0.003 | A+/-0.005 | B+/-0.005 | C+/-0.005 | # Of Holes |
|-----------|----------|-----------------|---------|--------------|----------|-----------|-----------|-----------|-----------|------------|
| 0.120     | 0.500    | 0.010           | 0.240   | 0.180        | 0.125    | 0.071     | 0.100     | 0.300     | 0         | 2          |



**NOTE:**

ALL DIMENSIONS ARE TO BE MEASURED WITH THE SPRING CLIP SECURED TO A FLAT SURFACE AND A COMPONENT OF THE NOMINAL DIAMETER IN PLACE.



SEASTROM MANUFACTURING CO., INC.  
 456 SEASTROM STREET  
 TWIN FALLS, IDAHO 83301  
 (208) 737-4300 FAX (208) 734-7222

ALL INFORMATION  
 COPYRIGHTED BY  
 SEASTROM MFG. ©

|                    |   |
|--------------------|---|
| <b>PART NO.:</b>   | 4521-12-50-1-S  |
| <b>PART NAME:</b>  | Spring Clips 01   |
| <b>MATERIAL:</b>   | Beryllium Copper  |
| <b>HEAT TREAT:</b> | Please refer to Material & Finish Specifications in Engineering Resources |
| <b>FINISH:</b>     | Silver (All Dimensions Are Prior To Plating)                              |

Dimensions in Inches