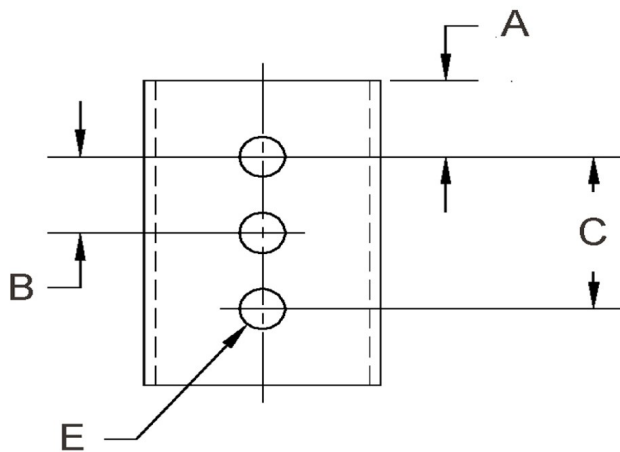
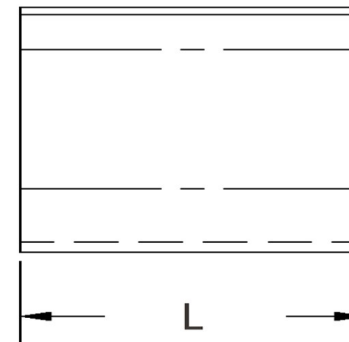


| D+/-0.015 | L+/-0.01 | T (Stk)+/-0.002 | H (Max) | W (Base Max) | X+/-0.02 | E+/-0.003 | A+/-0.005 | B+/-0.005 | C+/-0.005 | # Of Holes |
|-----------|----------|-----------------|---------|--------------|----------|-----------|-----------|-----------|-----------|------------|
| 0.100 | 0.400 | 0.010 | 0.230 | 0.160 | 0.112 | 0.071 | 0.200 | 0 | 0 | 1 |



NOTE:

ALL DIMENSIONS ARE TO BE MEASURED WITH THE SPRING CLIP SECURED TO A FLAT SURFACE AND A COMPONENT OF THE NOMINAL DIAMETER IN PLACE.



SEASTROM MANUFACTURING CO., INC.
 456 SEASTROM STREET
 TWIN FALLS, IDAHO 83301
 (208) 737-4300 FAX (208) 734-7222

ALL INFORMATION
 COPYRIGHTED BY
 SEASTROM MFG.



| | |
|--------------------|---------------------------------------------------------------------------|
| PART NO.: | 4521-10-40-2-C2 |
| PART NAME: | Spring Clips 01 |
| MATERIAL: | Spring Steel |
| HEAT TREAT: | Please refer to Material & Finish Specifications in Engineering Resources |
| FINISH: | Cadmium Type II (All Dimensions Are Prior To Plating) |

Dimensions in Inches