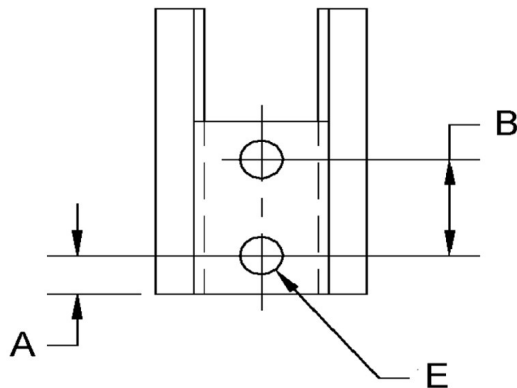
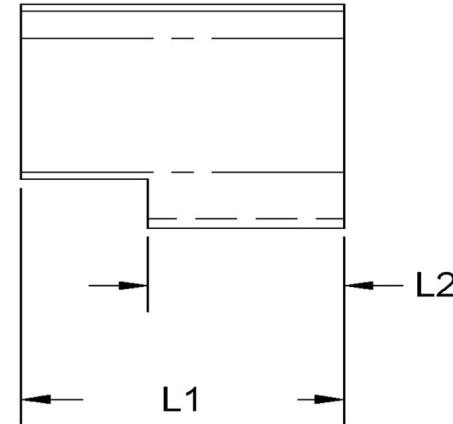
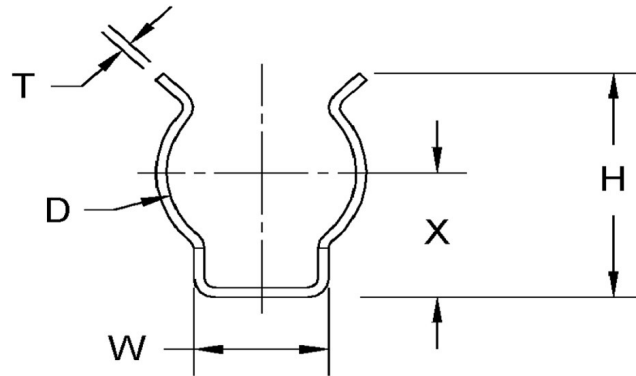


D+/-0.015	L1+/-0.01	L2+/-0.01	T (Stk)	H (Max)	W (Base Max)	X+/-0.02	E+/-0.003	A+/-0.005	B+/-0.005
0.875	1	0.625	0.011	0.955	0.645	0.500	0.113	0.125	0.375



**NOTE:**

ALL DIMENSIONS ARE TO BE MEASURED WITH THE SPRING CLIP SECURED TO A FLAT SURFACE AND A COMPONENT OF THE NOMINAL DIAMETER IN PLACE.



SEASTROM MANUFACTURING CO., INC.  
456 SEASTROM STREET  
TWIN FALLS, IDAHO 83301  
(208) 737-4300 FAX (208) 734-7222

ALL INFORMATION  
COPYRIGHTED BY  
SEASTROM MFG. ©

**PART NO.:** 4514-87-100-1-T

**PART NAME:** Spring Clips 12

**MATERIAL:** Beryllium Copper

**HEAT TREAT:** Please refer to Material & Finish Specifications in Engineering Resources

**FINISH:** Bright Tin (All Dimensions Are Prior To Plating)

Dimensions in Inches