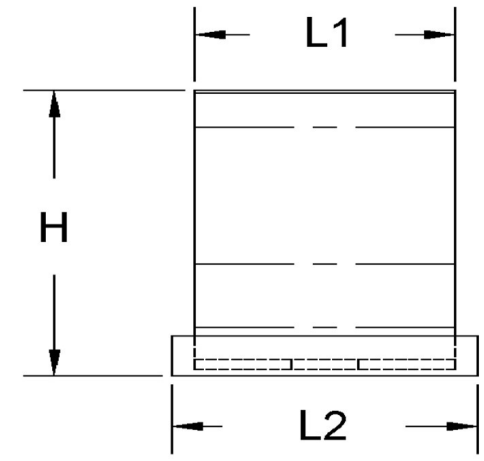
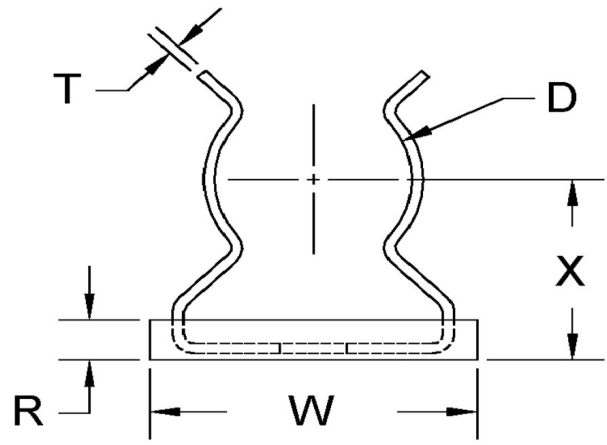


D+/-0.015	L1+/-0.01	L2+/-0.01	T (Stk)	H (Max)	W (Base Max)	X+/-0.03	E+/-0.005	A+/-0.01	R (Max)
0.330	0.375	0.437	0.016	0.570	0.470	0.350	0.100	0.218	0.125



ALL DIMENSIONS ARE TO BE MEASURED WITH THE SPRING CLIP SECURED TO A FLAT SURFACE AND A COMPONENT OF THE NOMINAL DIAMETER IN PLACE.



SEASTROM MANUFACTURING CO., INC.
 456 SEASTROM STREET
 TWIN FALLS, IDAHO 83301
 (208) 737-4300 FAX (208) 734-7222

ALL INFORMATION
 COPYRIGHTED BY
 SEASTROM MFG. ©

PART NO.:	4512-33-43-1-T
PART NAME:	Spring Clips 29
MATERIAL:	Beryllium Copper
HEAT TREAT:	Please refer to Material & Finish Specifications in Engineering Resources
FINISH:	Bright Tin (All Dimensions Are Prior To Plating)

Dimensions in Inches