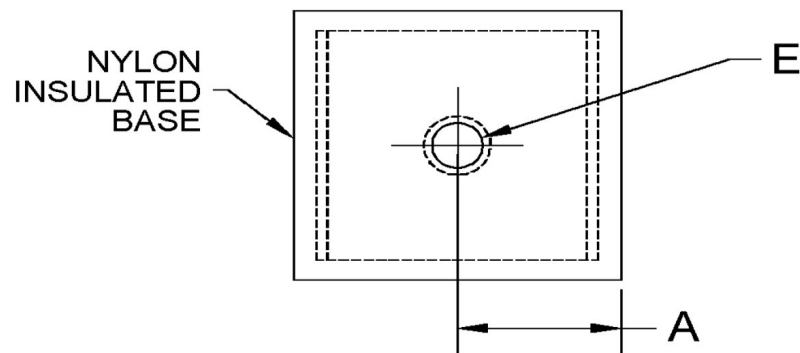
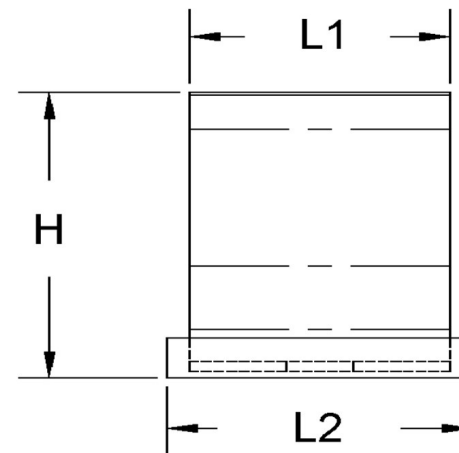
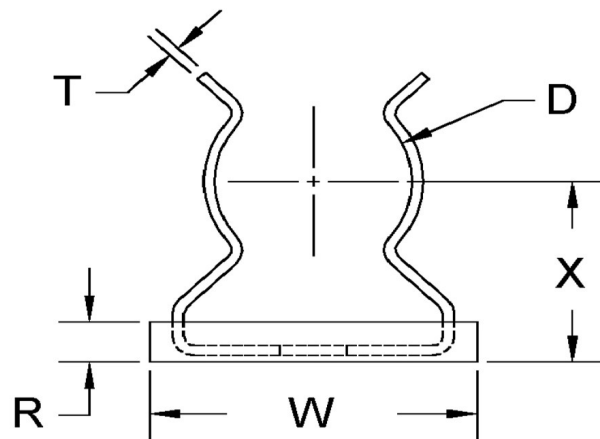


| D+/-0.015 | L1+/-0.01 | L2+/-0.01 | T (Stk) | H (Max) | W (Base Max) | X+/-0.03 | E+/-0.005 | A+/-0.01 | R (Max) |
|-----------|-----------|-----------|---------|---------|--------------|----------|-----------|----------|---------|
| 0.330 | 0.375 | 0.437 | 0.016 | 0.570 | 0.470 | 0.350 | 0.100 | 0.218 | 0.125 |



ALL DIMENSIONS ARE TO BE MEASURED WITH THE SPRING CLIP SECURED TO A FLAT SURFACE AND A COMPONENT OF THE NOMINAL DIAMETER IN PLACE.



SEASTROM MANUFACTURING CO., INC.
456 SEASTROM STREET
TWIN FALLS, IDAHO 83301
(208) 737-4300 FAX (208) 734-7222

ALL INFORMATION
COPYRIGHTED BY
SEASTROM MFG.



PART NO.: 4512-33-43-1

PART NAME: Spring Clips 29

MATERIAL: Beryllium Copper

HEAT TREAT: Please refer to Material & Finish Specifications in Engineering Resources

FINISH: None

Dimensions in Inches