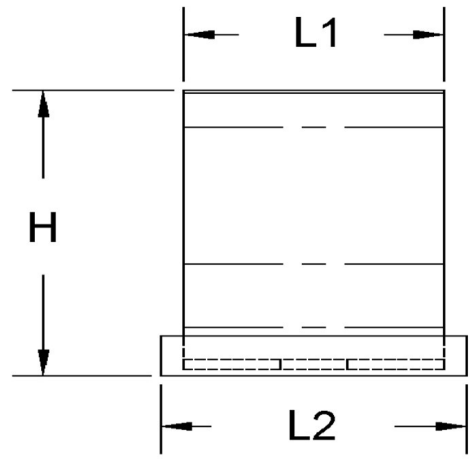
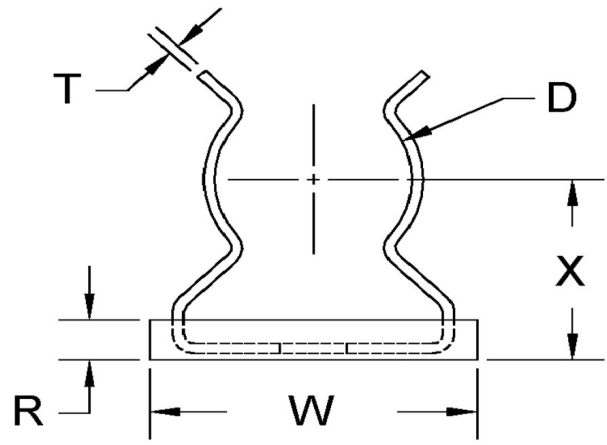


| D+/-0.015 | L1+/-0.01 | L2+/-0.01 | T (Stk) | H (Max) | W (Base Max) | X+/-0.03 | E+/-0.005 | A+/-0.01 | R (Max) |
|-----------|-----------|-----------|---------|---------|--------------|----------|-----------|----------|---------|
| 0.230 | 0.375 | 0.437 | 0.016 | 0.485 | 0.470 | 0.300 | 0.100 | 0.218 | 0.125 |



ALL DIMENSIONS ARE TO BE MEASURED WITH THE SPRING CLIP SECURED TO A FLAT SURFACE AND A COMPONENT OF THE NOMINAL DIAMETER IN PLACE.



SEASTROM MANUFACTURING CO., INC.
 456 SEASTROM STREET
 TWIN FALLS, IDAHO 83301
 (208) 737-4300 FAX (208) 734-7222

ALL INFORMATION
 COPYRIGHTED BY
 SEASTROM MFG. ©

| | |
|--------------------|---------------------------------------------------------------------------|
| PART NO.: | 4512-23-43-2 |
| PART NAME: | Spring Clips 29 |
| MATERIAL: | Spring Steel |
| HEAT TREAT: | Please refer to Material & Finish Specifications in Engineering Resources |
| FINISH: | None |

Dimensions in Inches