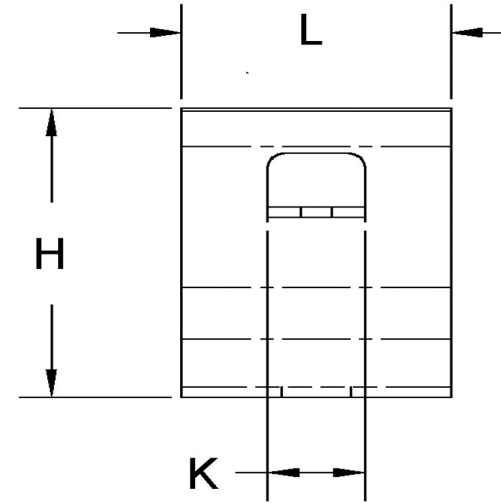
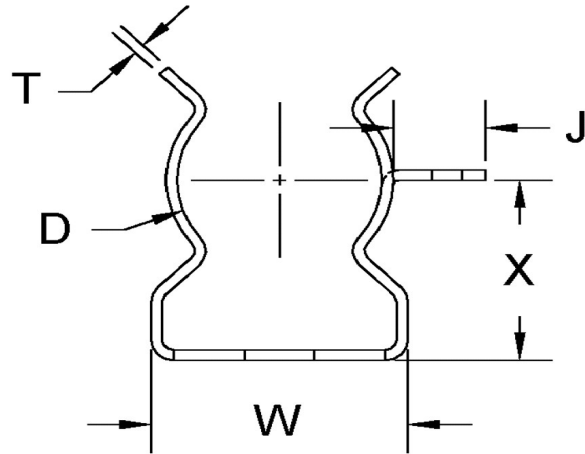
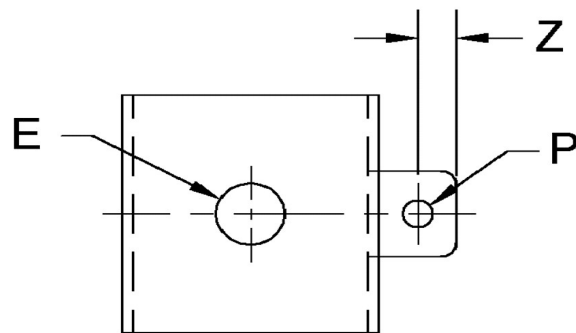


D \pm -.015	L \pm -.01	T (Stk) \pm -.002	H (Max)	W (Base Max)	X \pm -.02	E \pm -.003	J \pm -.01	K \pm -.01	P \pm -.005
0.530	0.500	0.032	0.812	0.650	0.500	0.140	0.190	0.141	0.078



NOTE:

ALL DIMENSIONS ARE TO BE MEASURED WITH THE SPRING CLIP SECURED TO A FLAT SURFACE AND A COMPONENT OF THE NOMINAL DIAMETER IN PLACE.



Dimensions in Inches



SEASTROM MANUFACTURING CO., INC.
456 SEASTROM STREET
TWIN FALLS, IDAHO 83301
(208) 737-4300 FAX (208) 734-7222

ALL INFORMATION
COPYRIGHTED BY
SEASTROM MFG. ©

PART NO.: 4502-53-50-2-T

PART NAME: Spring Clips 27

MATERIAL: Spring Steel

HEAT TREAT: Please refer to Material & Finish Specifications in Engineering Resources

FINISH: Bright Tin (All Dimensions Are Prior To Plating)