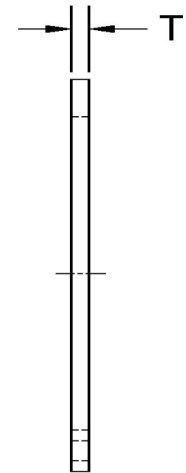


| Shaft Dia | Groove Dia+/-0.002 | Groove Width+0.003-0 | A+0.002-0.005 | T+/-0.001 |
|-----------|--------------------|----------------------|---------------|-----------|
| 0.344     | 0.321              | 0.029                | 0.309         | 0.025     |



SEASTROM MANUFACTURING CO., INC.  
 456 SEASTROM STREET  
 TWIN FALLS, IDAHO 83301  
 (208) 737-4300 FAX (208) 734-7222

ALL INFORMATION  
 COPYRIGHTED BY  
 SEASTROM MFG. ©

|                    |   |
|--------------------|---|
| <b>PART NO.:</b>   | 2727-4-34   |
| <b>PART NAME:</b>  | Retaining Rings, External   |
| <b>MATERIAL:</b>   | Spring Steel  |
| <b>HEAT TREAT:</b> | Please refer to Material & Finish Specifications in Engineering Resources |
| <b>FINISH:</b>     | Phosphate (All Dimensions Are Prior To Plating)                           |

Dimensions in Inches