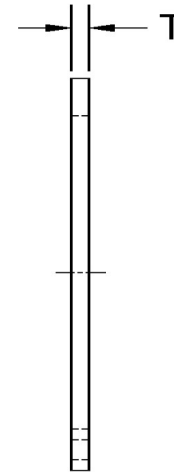


| Shaft Dia | Groove Dia $\pm$ .005 | Groove Width $\pm$ .004-0 | A $\pm$ .013-.02 | T $\pm$ -.003 |
|-----------|-----------------------|---------------------------|------------------|---------------|
| 1.625     | 1.529                 | 0.068                     | 1.503            | 0.062         |



SEASTROM MANUFACTURING CO., INC.  
 456 SEASTROM STREET  
 TWIN FALLS, IDAHO 83301  
 (208) 737-4300 FAX (208) 734-7222

ALL INFORMATION  
 COPYRIGHTED BY  
 SEASTROM MFG. ©

|                    |   |
|--------------------|---|
| <b>PART NO.:</b>   | 2727-27-162   |
| <b>PART NAME:</b>  | Retaining Rings, External   |
| <b>MATERIAL:</b>   | Spring Steel  |
| <b>HEAT TREAT:</b> | Please refer to Material & Finish Specifications in Engineering Resources |
| <b>FINISH:</b>     | Phosphate (All Dimensions Are Prior To Plating)                           |

Dimensions in Inches