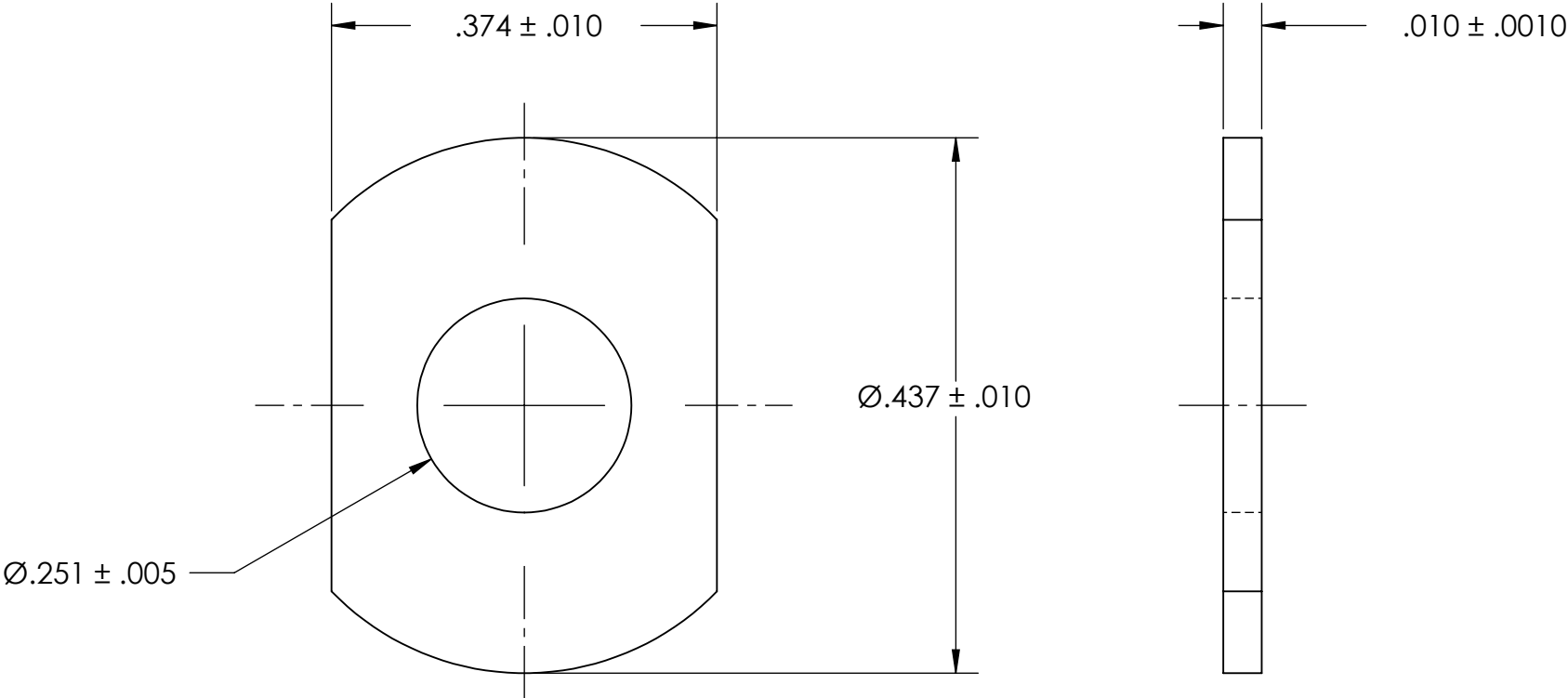


REFERENCE SEASTROM WORKMANSHIP STD. 8.4.1.W2



NOTES  
1. NONE

2. SCREW SIZE: -

**PROPRIETARY AND CONFIDENTIAL**  
THE INFORMATION CONTAINED IN THIS DRAWING IS THE SOLE PROPERTY OF SEASTROM MANUFACTURING. ANY REPRODUCTION IN PART OR AS A WHOLE WITHOUT THE WRITTEN PERMISSION OF SEASTROM MANUFACTURING IS PROHIBITED.

|  |           |      |      |                                    |  |
|--|-----------|------|------|------------------------------------|--|
| DIMENSIONS ARE IN INCHES<br>TOLERANCES:<br>FRACTIONAL ± 1/32<br>ANGULAR: MACH ± 1/2 Deg<br>TWO PLACE DECIMAL ±.01<br>THREE PLACE DECIMAL ±.005 |           | NAME | DATE | SEASTROM MFG<br><br>CLIPPED WASHER |  |
|  | DRAWN     |      |      |                                    |  |
|  | CHECKED   |      |      |                                    |  |
|  | ENG APPR. |      |      |                                    |  |
|  | MFG APPR. |      |      |                                    |  |
| MATERIAL<br>COLD ROLLED STEEL  | Q.A.      |      |      | SIZE DWG. NO. REV.<br>A 5738-8 -   |  |
| FINISH<br>SEE NOTE 1   | COMMENTS: |      |      |                                    |  |
| DRAWING IS NOT TO SCALE  |           |      |      | SHEET 1 OF 1                       |  |