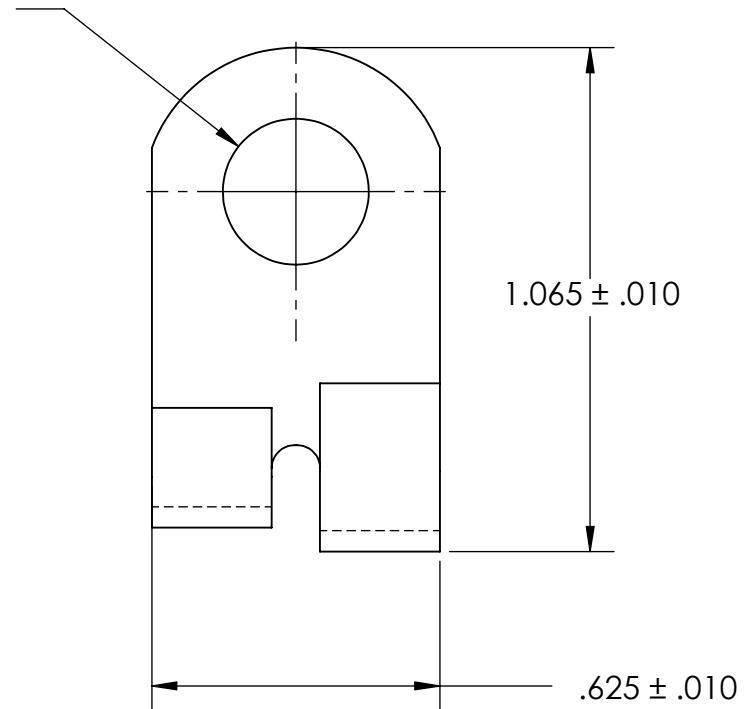


Ø.267 ± .005



NOTES

1. TIN PLATE PER ASTM B545 CLASS B
2. WIRE SIZE: 6-8
3. SCREW SIZE: 1/4
4. DIMENSIONS APPLY PRIOR TO PLATING.

PROPRIETARY AND CONFIDENTIAL

THE INFORMATION CONTAINED IN THIS DRAWING IS THE SOLE PROPERTY OF SEASTROM MANUFACTURING. ANY REPRODUCTION IN PART OR AS A WHOLE WITHOUT THE WRITTEN PERMISSION OF SEASTROM MANUFACTURING IS PROHIBITED.

DIMENSIONS ARE IN INCHES
TOLERANCES:
FRACTIONAL ± 1/32
ANGULAR: MACH ± 1/2 Deg
TWO PLACE DECIMAL ± .01
THREE PLACE DECIMAL ± .005

MATERIAL
COPPER

FINISH
SEE NOTE 1

DRAWING IS NOT TO SCALE

	NAME	DATE
DRAWN		
CHECKED		
ENG APPR.		
MFG APPR.		
Q.A.		
COMMENTS:		

SEASTROM MFG

SOLDER LUG

SIZE	DWG. NO.	REV.
A	5461-3C	-

SHEET 1 OF 1