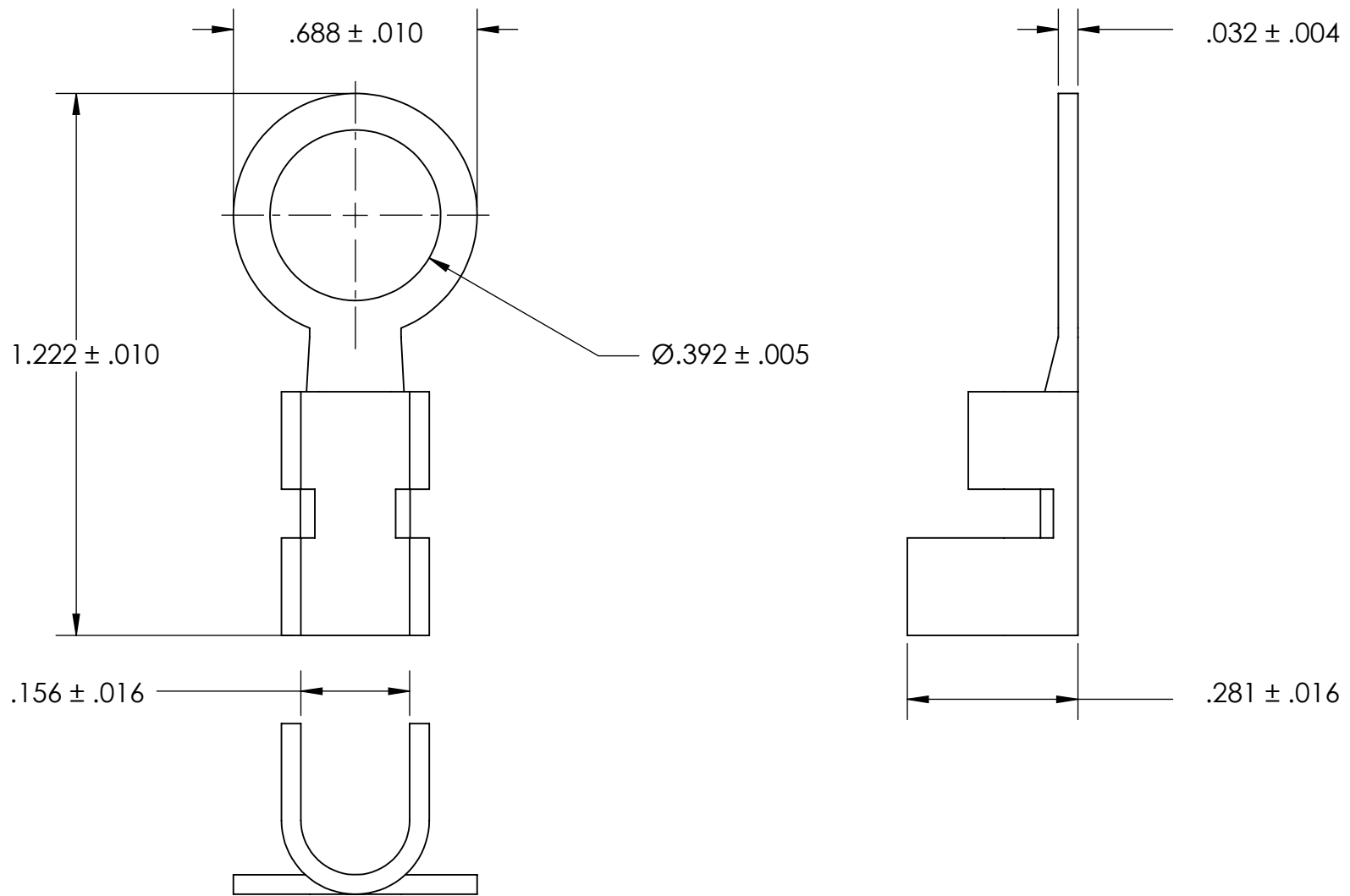


REFERENCE SEASTROM WORKMANSHIP STD. 8.4.1.W2



NOTES

1. BRIGHT TIN PLATE PER ASTM B545, CLASS B
2. SCREW SIZE: 3/8
3. DIMENSIONS APPLY PRIOR TO PLATING.

**PROPRIETARY AND CONFIDENTIAL**  
 THE INFORMATION CONTAINED IN THIS DRAWING IS THE SOLE PROPERTY OF SEASTROM MANUFACTURING. ANY REPRODUCTION IN PART OR AS A WHOLE WITHOUT THE WRITTEN PERMISSION OF SEASTROM MANUFACTURING IS PROHIBITED.

|  |           |      |              |          |
|--|-----------|------|--------------|----------|
| DIMENSIONS ARE IN INCHES<br>TOLERANCES:<br>FRACTIONAL $\pm 1/32$<br>ANGULAR: MACH $\pm 1/2$ Deg<br>TWO PLACE DECIMAL $\pm .01$<br>THREE PLACE DECIMAL $\pm .005$ | NAME      | DATE | SEASTROM MFG |          |
|  | DRAWN     |      |              |          |
|  | CHECKED   |      | SOLDER LUG   |          |
|  | ENG APPR. |      |              |          |
|  | MFG APPR. |      |              |          |
| MATERIAL   | COMMENTS: |      | SIZE         | DWG. NO. |
| BRASS, HALF HARD   |           |      | A            | 5454-4C  |
| FINISH   |           |      | REV.         |          |
| SEE NOTE 1   |           |      | -            |          |
| DRAWING IS NOT TO SCALE  |           |      | SHEET 1 OF 1 |          |