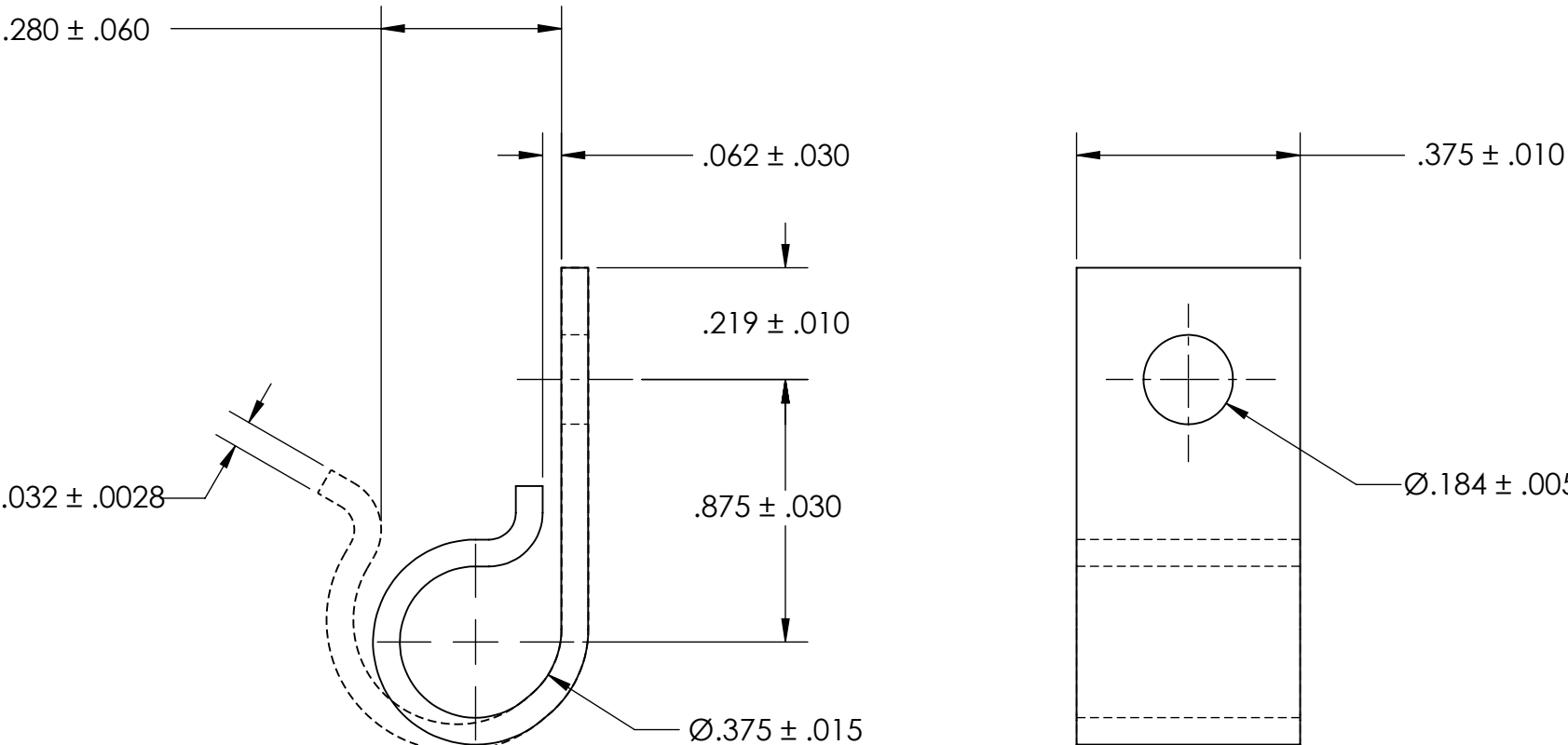


REFERENCE SEASTROM WORKMANSHIP STD. 8.4.1.W2



NOTES

- 1. ZINC PLATE PER ASTM B633, SC1, TYPE III or V, Clear
- 2. DIMENSIONS APPLY PRIOR TO PLATING.

PROPRIETARY AND CONFIDENTIAL
THE INFORMATION CONTAINED IN THIS DRAWING IS THE SOLE PROPERTY OF SEASTROM MANUFACTURING. ANY REPRODUCTION IN PART OR AS A WHOLE WITHOUT THE WRITTEN PERMISSION OF SEASTROM MANUFACTURING IS PROHIBITED.

DIMENSIONS ARE IN INCHES TOLERANCES: FRACTIONAL ± 1/32 ANGULAR: MACH ± 1/2 Deg TWO PLACE DECIMAL ±.01 THREE PLACE DECIMAL ±.005		NAME	DATE	SEASTROM MFG		
	DRAWN					
	CHECKED					
	ENG APPR.					
	MFG APPR.					
MATERIAL COLD ROLLED STEEL	Q.A.			J CLIP		
COMMENTS:						
FINISH SEE NOTE 1				SIZE A	DWG. NO. 5318-37-2	REV. -
DRAWING IS NOT TO SCALE				SHEET 1 OF 1		