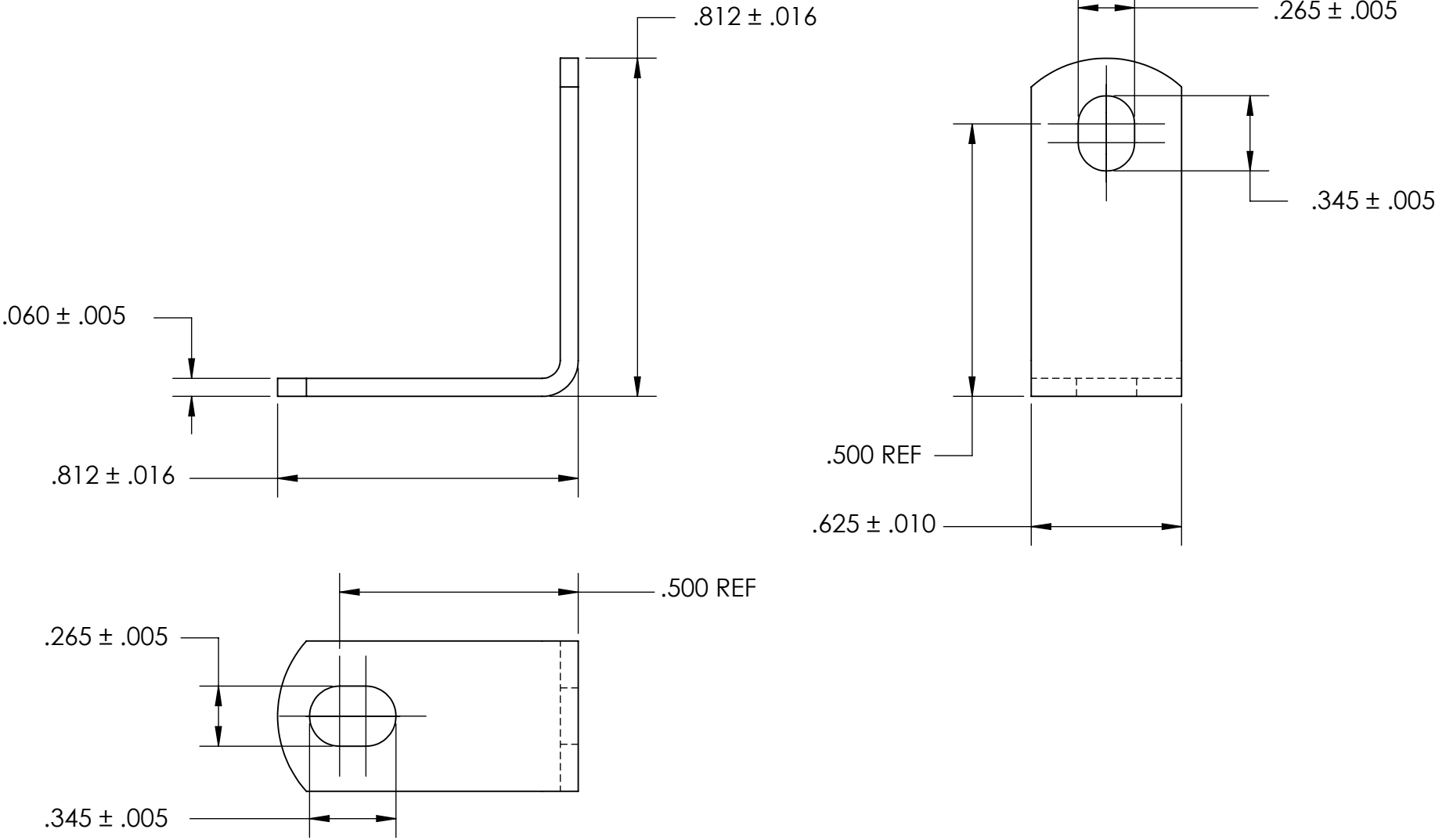


REFERENCE SEASTROM WORKMANSHIP STD. 8.4.1.W2



- NOTES
- 1. ZINC PLATE PER ASTM B633, SC1, TYPE II or VI, Yellow
 - 2. SCREW SIZE: 1/4
 - 3. DIMENSIONS APPLY PRIOR TO PLATING.

PROPRIETARY AND CONFIDENTIAL

THE INFORMATION CONTAINED IN THIS DRAWING IS THE SOLE PROPERTY OF SEASTROM MANUFACTURING. ANY REPRODUCTION IN PART OR AS A WHOLE WITHOUT THE WRITTEN PERMISSION OF SEASTROM MANUFACTURING IS PROHIBITED.

DIMENSIONS ARE IN INCHES TOLERANCES: FRACTIONAL ± 1/32 ANGULAR: MACH ± 1/2 Deg TWO PLACE DECIMAL ±.01 THREE PLACE DECIMAL ±.005		NAME	DATE	SEASTROM MFG ANGLE BRACKET	
	DRAWN				
	CHECKED				
	ENG APPR.				
	MFG APPR.				
MATERIAL COLD ROLLED STEEL	Q.A.			SIZE DWG. NO. REV. A 4929-2-Z2 -	
FINISH SEE NOTE 1	COMMENTS:				
DRAWING IS NOT TO SCALE					
				SHEET 1 OF 1	