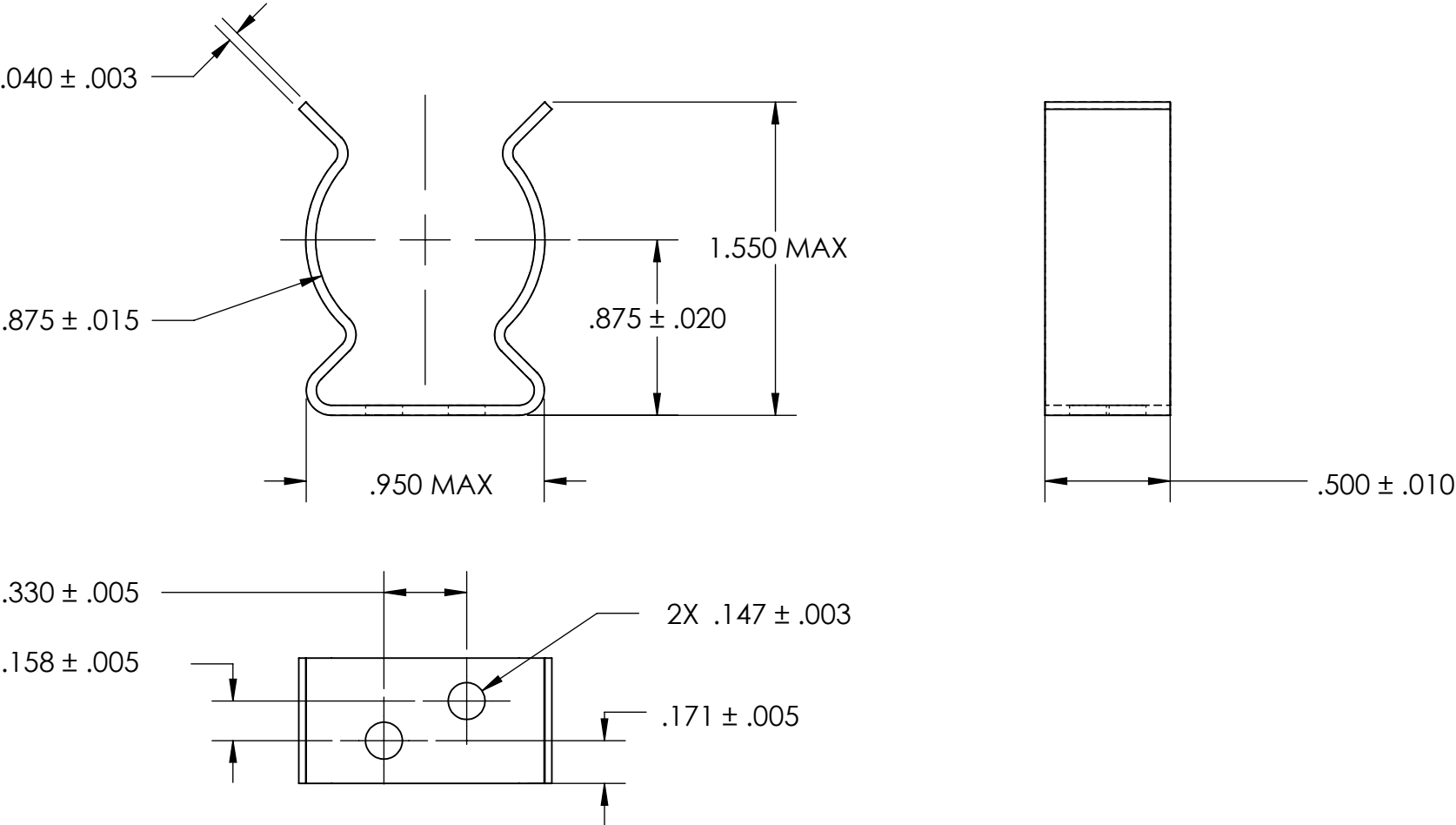


REFEERENCE SEASTROM WORKMANSHIP STD. 8.4.1.W2



- NOTES
- 1. BERYLLIUM COPPER
  - 2. HEAT TREAT: 73-79 HR15N
  - 3. CADMIUM PLATE PER AMS QQ-P-416 TYPE II CLASS 2
  - 4. DIMENSIONS ARE TAKEN WITH THE PART CLAMPED TO A FLAT SURFACE AND A DUMMY COMPONENT IN PLACE.
  - 5. DIMENSIONS APPLY PRIOR TO PLATING.

**PROPRIETARY AND CONFIDENTIAL**  
THE INFORMATION CONTAINED IN THIS DRAWING IS THE SOLE PROPERTY OF SEASTROM MANUFACTURING. ANY REPRODUCTION IN PART OR AS A WHOLE WITHOUT THE WRITTEN PERMISSION OF SEASTROM MANUFACTURING IS PROHIBITED.

DIMENSIONS ARE IN INCHES TOLERANCES: FRACTIONAL ± 1/32 ANGULAR: MACH ± 1/2 Deg TWO PLACE DECIMAL ±.01 THREE PLACE DECIMAL ±.005		NAME	DATE	SEASTROM MFG	
	DRAWN				
	CHECKED			SPRING CLIP	
	ENG APPR.				
	MFG APPR.				
MATERIAL SEE NOTE 1	Q.A.			SIZE <b>A</b> DWG. NO. <b>4515-87-50-1-C2</b> REV. <b>-</b>	
HEAT TREAT SEE NOTE 2	COMMENTS:				
FINISH SEE NOTE 3	DRAWING IS NOT TO SCALE				
				SHEET 1 OF 1	