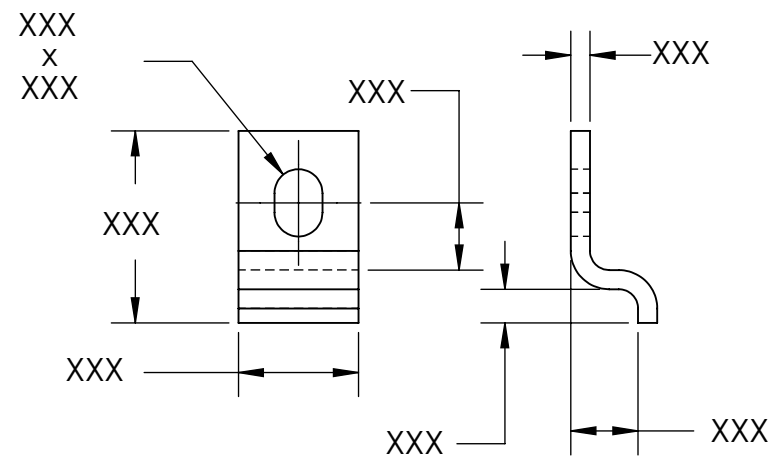


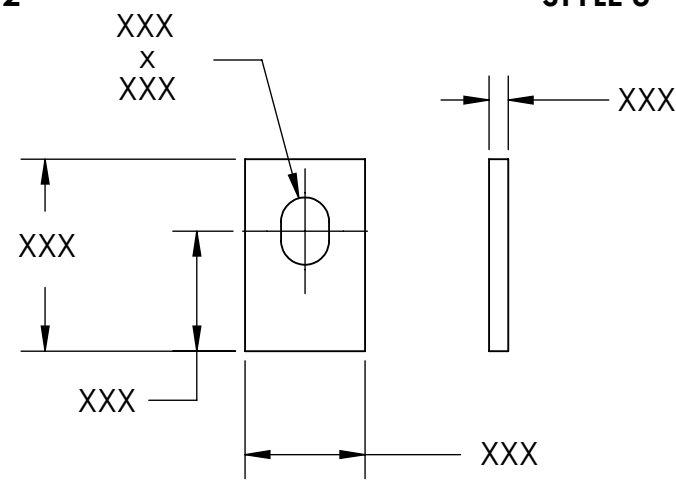
STYLE 1

STYLE 2

STYLE 3



STYLE 4



STYLE 5

- NOTES**
- CADMIUM PLATE PER AMS QQ-P-416 TYPE II CLASS 2
 - STYLE: 1
 - DIMENSIONS APPLY PRIOR TO PLATING.

PROPRIETARY AND CONFIDENTIAL
 THE INFORMATION CONTAINED IN THIS DRAWING IS THE SOLE PROPERTY OF SEASTROM MANUFACTURING. ANY REPRODUCTION IN PART OR AS A WHOLE WITHOUT THE WRITTEN PERMISSION OF SEASTROM MANUFACTURING IS PROHIBITED.

DIMENSIONS ARE IN INCHES TOLERANCES: FRACTIONAL ± 1/32 ANGULAR: MACH ± 1/2 Deg TWO PLACE DECIMAL ± .01 THREE PLACE DECIMAL ± .005		NAME	DATE	SEASTROM MFG
MATERIAL COLD ROLLED STEEL		DRAWN		
FINISH SEE NOTE 1		CHECKED		COMPONENT CLAMP
DRAWING IS NOT TO SCALE		ENG APPR.		
		MFG APPR.		SIZE A DWG. NO. 2811-2-C2 REV. -
		Q.A.		
		COMMENTS:		SHEET 1 OF 1