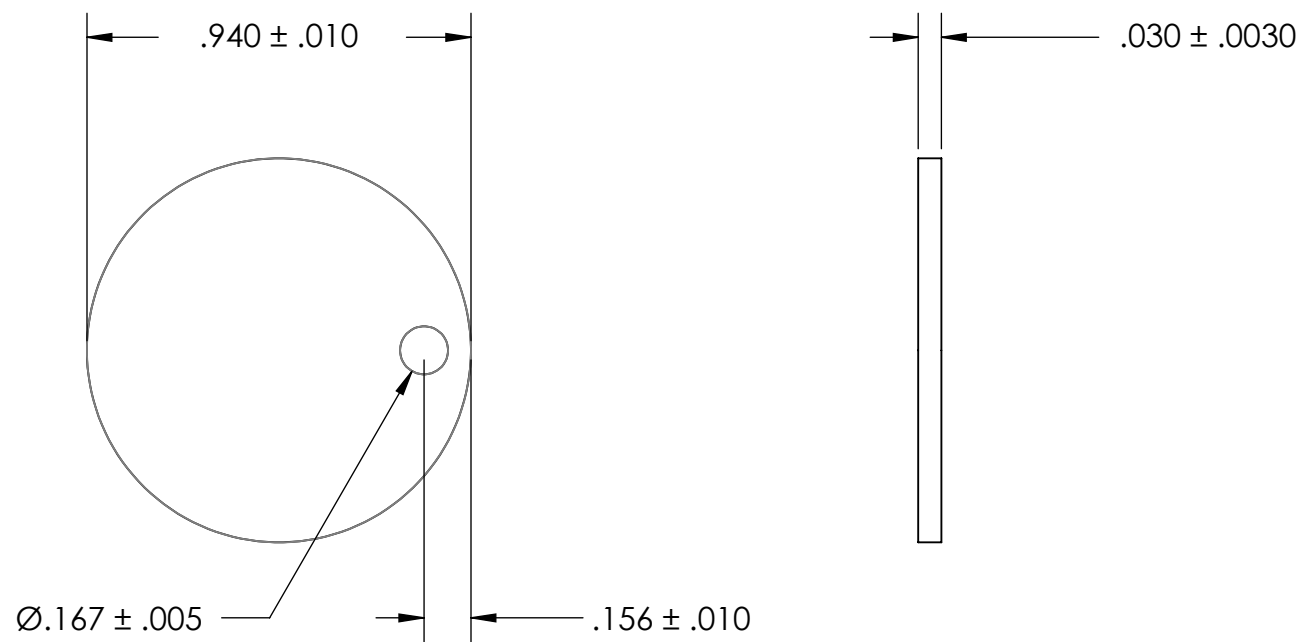


REFERENCE SEASTROM WORKMANSHIP STD. 8.4.1.W2



NOTES:

1. CADMIUM PLATE PER AMS QQ-P-416 TYPE II CLASS 2
2. DIMENSIONS APPLY PRIOR TO PLATING.
3. SCREW SIZE: 8

PROPRIETARY AND CONFIDENTIAL
THE INFORMATION CONTAINED IN THIS
DRAWING IS THE SOLE PROPERTY OF
SEASTROM MANUFACTURING. ANY
REPRODUCTION IN PART OR AS A WHOLE
WITHOUT THE WRITTEN PERMISSION OF
SEASTROM MANUFACTURING IS
PROHIBITED.

DIMENSIONS ARE IN INCHES TOLERANCES: FRACTIONAL ± 1/32 ANGULAR: MACH ± 1/2 Deg TWO PLACE DECIMAL ±.01 THREE PLACE DECIMAL ±.005		NAME	DATE	SEASTROM MFG		
	DRAWN					
	CHECKED					
	ENG APPR.					
	MFG APPR.					
MATERIAL	Q.A.			HOLD DOWN CLAMP		
COLD ROLLED STEEL	COMMENTS:					
FINISH				SIZE	DWG. NO.	REV.
SEE NOTE 1				A	2810-18-C2	-
DRAWING IS NOT TO SCALE				SHEET 1 OF 1		