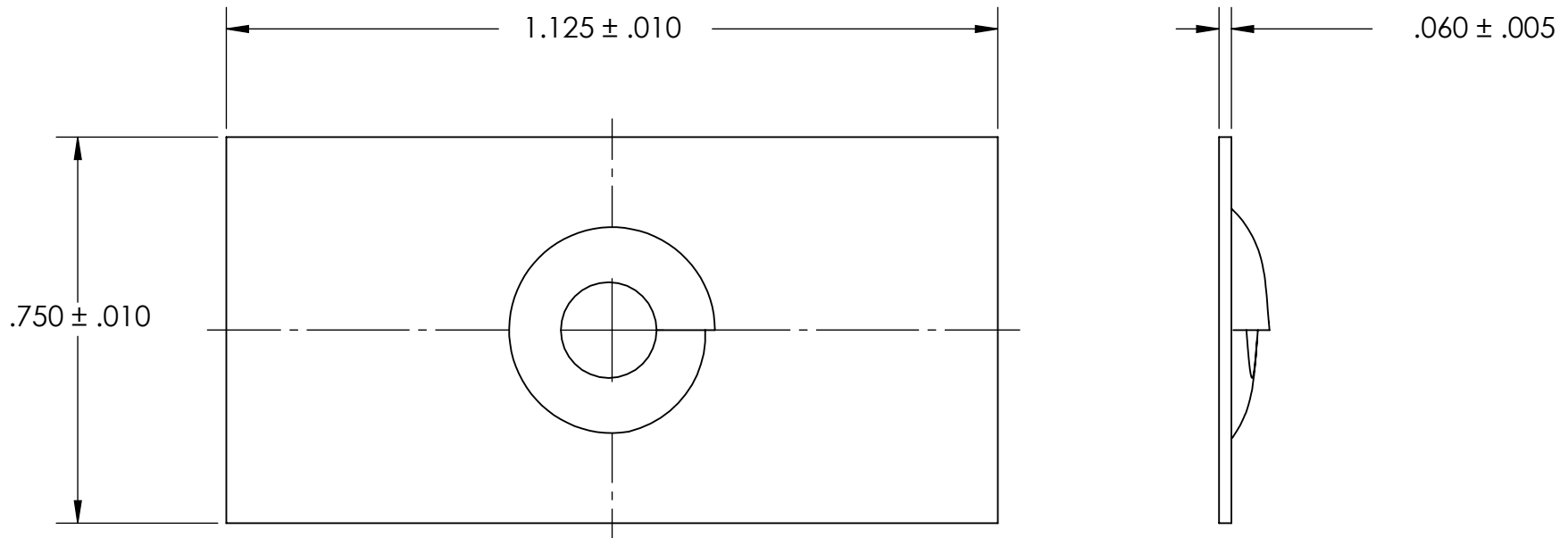


REFERENCE SEASTROM WORKMANSHIP STD. 8.4.1.W2



NOTES

1. NONE
2. SCREW SIZE: 20-9
3. SCREW TYPE: B & AB

PROPRIETARY AND CONFIDENTIAL
 THE INFORMATION CONTAINED IN THIS DRAWING IS THE SOLE PROPERTY OF SEASTROM MANUFACTURING. ANY REPRODUCTION IN PART OR AS A WHOLE WITHOUT THE WRITTEN PERMISSION OF SEASTROM MANUFACTURING IS PROHIBITED.

| | | | | |
|--|----------------------|-------------------------|--------------|--------------|
| DIMENSIONS ARE IN INCHES TOLERANCES: FRACTIONAL $\pm 1/32$ ANGULAR: MACH $\pm 1/2$ Deg TWO PLACE DECIMAL $\pm .01$ THREE PLACE DECIMAL $\pm .005$ | | NAME | DATE | SEASTROM MFG |
| MATERIAL COLD ROLLED STEEL | FINISH SEE NOTE 1 | DRAWN | CHECKED | |
| | | ENG APPR. | MFG APPR. | |
| | | Q.A. | COMMENTS: | |
| | | DRAWING IS NOT TO SCALE | | |
| SIZE A | DWG. NO. 2720-6 | REV. - | SHEET 1 OF 1 | |