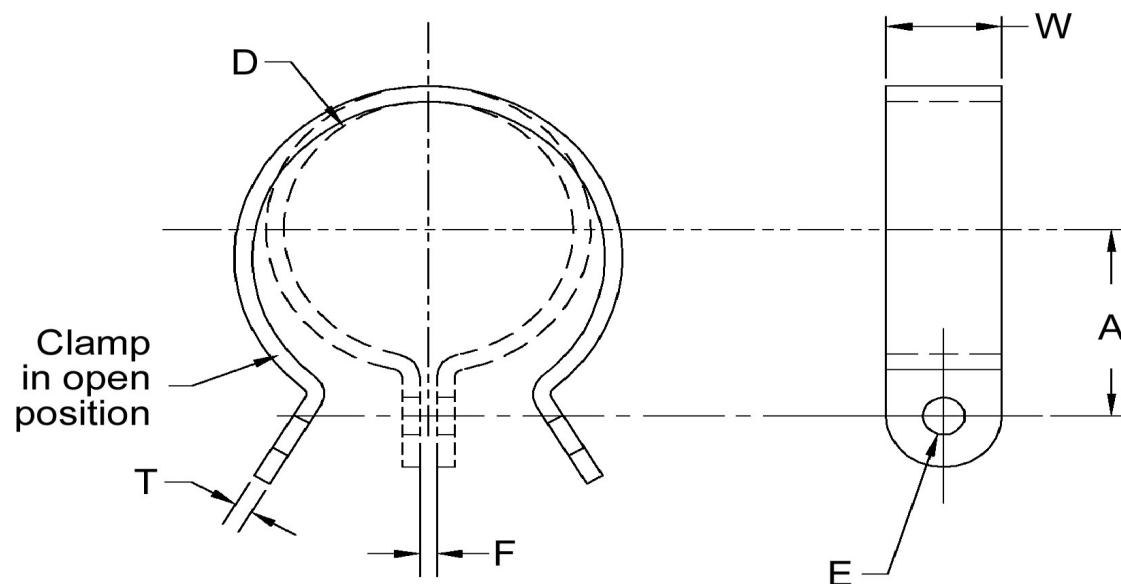


D+/-0.015	W+/-0.01	T+/-0.0025	A+/-0.03	E+/-0.005	F+/-0.06
0.562	0.375	0.030	0.531	0.201	0.125



NOTE:

CLAMPS ARE SUPPLIED IN THE OPEN POSITION. ALL DIMENSIONS TO BE MEASURED WITH DUMMY COMPONENT IN PLACE AND CLAMP CLOSED.

Dimensions in Inches



SEASTROM MANUFACTURING CO., INC.
456 SEASTROM STREET
TWIN FALLS, IDAHO 83301
(208) 737-4300 FAX (208) 734-7222

ALL INFORMATION
COPYRIGHTED BY
SEASTROM MFG.



PART NO.: 5315-56-1-A2

PART NAME: Clamps, Tube

MATERIAL: Aluminum

HEAT TREAT: Please refer to Material & Finish Specifications in Engineering Resources

FINISH: Anodized Type II Clear (All Dimensions Are Prior To Plating)