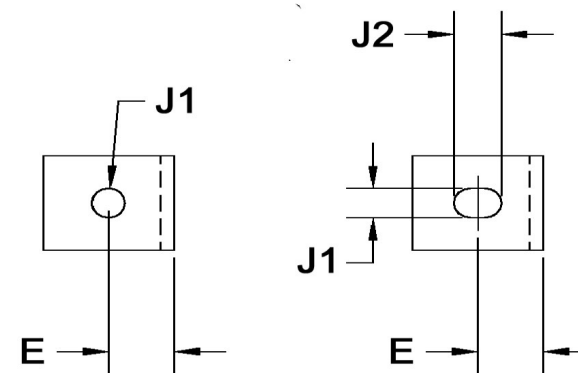
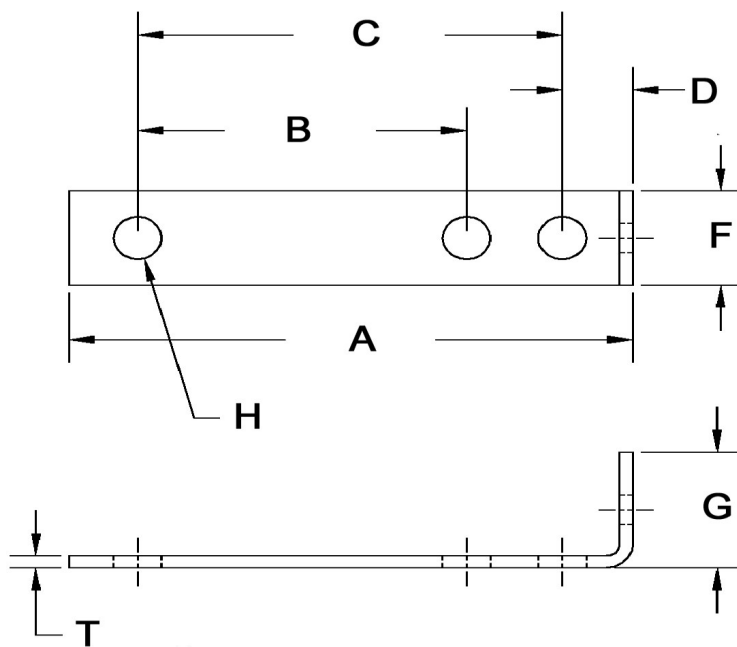


A+/-0.016	B+/-0.01	C+/-0.01	D+/-0.01	E+/-0.01	F+/-0.016	G+/-0.016	H+/-0.005	J1+/-0.005	J2+/-0.005	T+/-0.005
1.500	0	0.625	0.625	0.375	0.375	0.563	0.150	0.150	0	0.063



Dimensions in Inches



SEASTROM MANUFACTURING CO., INC.
456 SEASTROM STREET
TWIN FALLS, IDAHO 83301
(208) 737-4300 FAX (208) 734-7222

ALL INFORMATION
COPYRIGHTED BY
SEASTROM MFG. ©

PART NO.: 4925-9

PART NAME: Brackets, Terminal Board

MATERIAL: Cold Rolled Steel

HEAT TREAT: Please refer to Material & Finish Specifications in Engineering Resources

FINISH: Cadmium Type I (All Dimensions Are Prior To Plating)