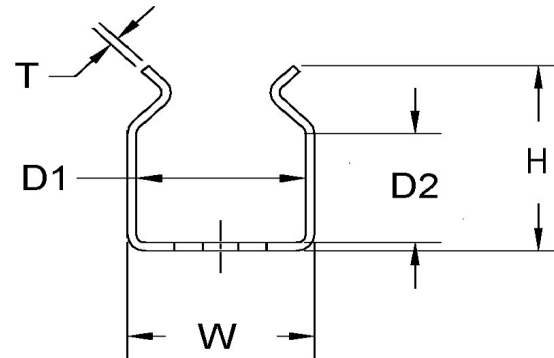
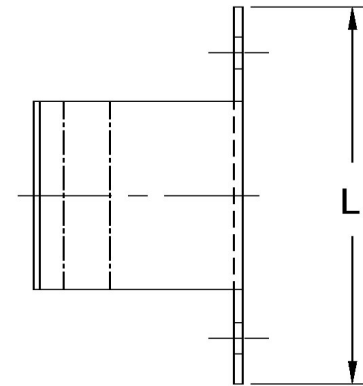
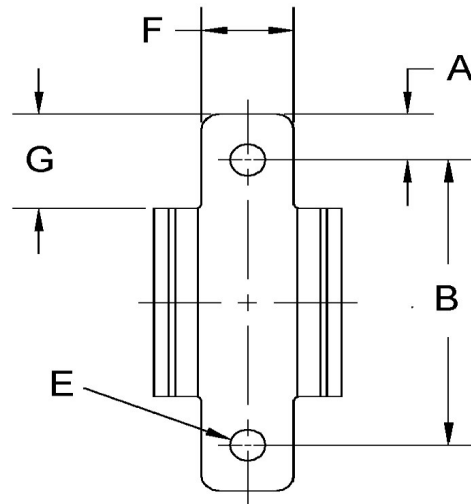


| D1+/-0.015 | D2+/-0.015 | L+/-0.01 | T (Stk)+/-0.0015 | H (Max) | W (Base Max) | G+/-0.005 | E+/-0.003 | A+/-0.005 | B+/-0.005 | F+/-0.005 |
|------------|------------|----------|------------------|---------|--------------|-----------|-----------|-----------|-----------|-----------|
| 0.725      | 0.750      | 1.760    | 0.025            | 1.280   | 0.800        | 0.415     | 0.188     | 0.250     | 1.253     | 0.500     |



**NOTE:**

ALL DIMENSIONS ARE TO BE MEASURED WITH THE SPRING CLIP SECURED TO A FLAT SURFACE AND A COMPONENT OF THE NOMINAL DIAMETER IN PLACE.

Dimensions in Inches



SEASTROM MANUFACTURING CO., INC.  
456 SEASTROM STREET  
TWIN FALLS, IDAHO 83301  
(208) 737-4300 FAX (208) 734-7222

ALL INFORMATION  
COPYRIGHTED BY  
SEASTROM MFG. ©

**PART NO.:** 4565-72X75-176-2-N

**PART NAME:** Spring Clips 24

**MATERIAL:** Spring Steel

**HEAT TREAT:** Please refer to Material & Finish Specifications in Engineering Resources

**FINISH:** Nickel (All Dimensions Are Prior To Plating)