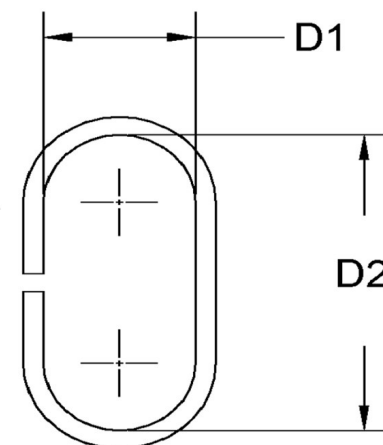
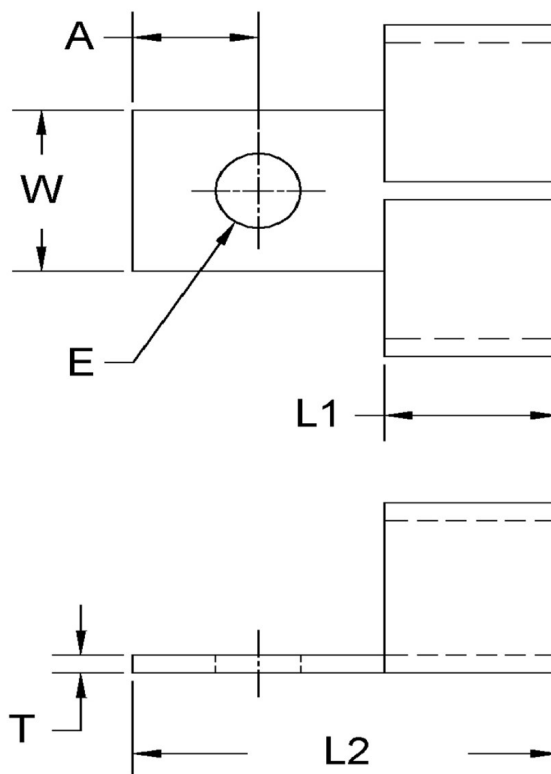


D1 (Comp Size)+/-0.015	D2 (Comp Size)+/-0.015	L1+/-0.01	L2+/-0.01	T (Stk)+/-0.002	A+/-0.005	W (Max)	E+/-0.003
0.172	0.365	0.187	0.500	0.032	0.156	0.250	0.115



NOTE:

ALL DIMENSIONS ARE TO BE MEASURED WITH THE SPRING CLIP SECURED TO A FLAT SURFACE AND A COMPONENT OF THE NOMINAL DIAMETER IN PLACE.

Dimensions in Inches



SEASTROM MANUFACTURING CO., INC.
456 SEASTROM STREET
TWIN FALLS, IDAHO 83301
(208) 737-4300 FAX (208) 734-7222

ALL INFORMATION
COPYRIGHTED BY
SEASTROM MFG.



PART NO.: 4533-17X36-50-2-C2

PART NAME: Spring Clips 21

MATERIAL: Spring Steel

HEAT TREAT: Please refer to Material & Finish Specifications in Engineering Resources

FINISH: Cadmium Type II (All Dimensions Are Prior To Plating)