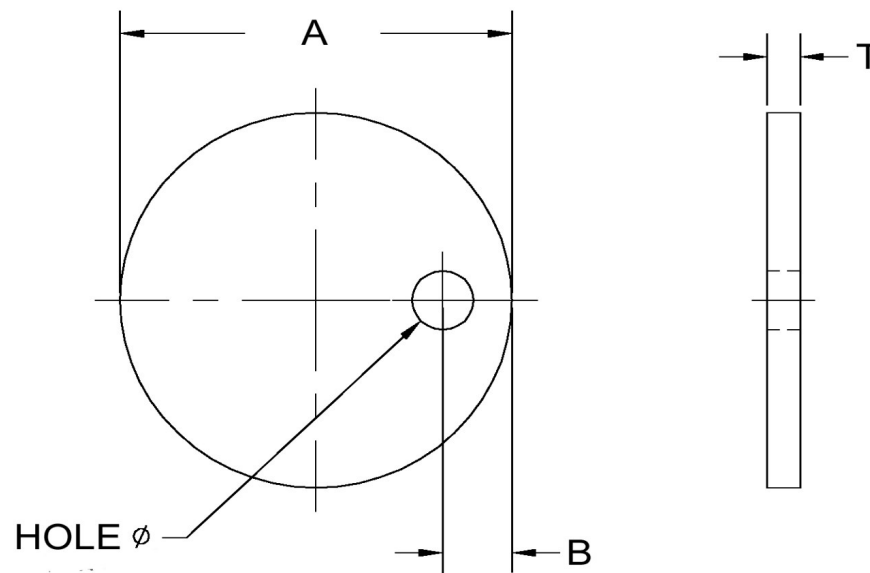


Hole Dia+/-0.005	A+/-0.01	B+/-0.01	T+/-0.004	Screw Size
0.130	0.375	0.125	0.042	4



Dimensions in Inches



SEASTROM MANUFACTURING CO., INC.  
456 SEASTROM STREET  
TWIN FALLS, IDAHO 83301  
(208) 737-4300 FAX (208) 734-7222

ALL INFORMATION  
COPYRIGHTED BY  
SEASTROM MFG. ©

PART NO.: 2810-8

PART NAME: Clamps, Hold Down

MATERIAL: Cold Rolled Steel

HEAT TREAT: Please refer to Material & Finish Specifications in Engineering Resources

FINISH: Cadmium Type I (All Dimensions Are Prior To Plating)