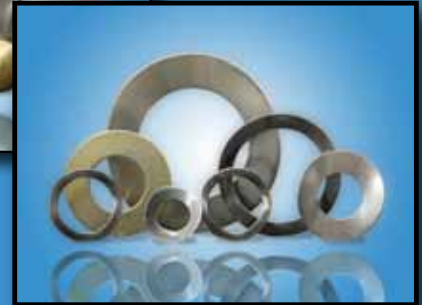
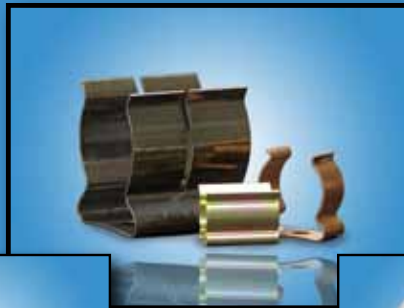




*The Premier Stocking Manufacturer
of
Precision Fasteners
Made in USA since 1928*



**YOUR
ONE STOP
PARTNER**





Company Overview

Seastrom is a true story of the American Dream. Seastrom was founded in Glendale, California in 1928 by Wensil Seastrom in his garage. The company resided in Glendale in several locations until 1994, when it moved to Twin Falls, Idaho. Still family owned today, Seastrom's state-of-the-art 100,000 square foot facility houses the premier stocking manufacturer of precision fasteners.

Seastrom stocks over 44,000 part numbers of a wide variety of fasteners, including flat round washers, spring clips, spacers, shoulder washers, lock washers, clamps, brackets, expansion plugs and much more. We are also manufacture and supply Hiram Jones pins, terminals & connectors.

Aside from our huge inventory of stocked parts, Seastrom can modify any of our standard part numbers to meet your applications reducing the cost of tooling.

If our standards or a modification doesn't work, Seastrom engineers will work with you to design the best and most economical part for your application.

Seastrom Manufacturing is a full service manufacturer. With Seastrom, we not only make quality parts, we help make quality products.



www.seastrom-mfg.com

www.seastromwashers.com



The Seastrom Advantage

Your One Stop Partner for Precision Fasteners

As budgets get tighter and you take on more responsibilities, Seastrom as a full service manufacturer has the stock, personnel and expertise to help you control costs. You can choose from our huge selection of stocked standard precision hardware to find the part that meets your specifications. If stocked standards do not meet your requirements, we can partner with your company to engineer new parts and products, recommend economical purchasing, and can stock proprietary products for immediate delivery.

Seastrom emphasizes systems integration, quality engineering, high-speed production, facility-wide networking and strict project control to promote product quality, project safety and conformance to technical standards. We utilize virtually all stampable metals and non-metals. Seastrom specializes in extensive die and material changes to meet the wide variety of customer orders and our reputation for quality workmanship assures each customer that their product needs will be met. Our goal is to be your one stop partner for precision fasteners.

Stock Standard Fasteners

Seastrom manufactures and stocks the largest quantity of precision fasteners in the industry. Over 44,000 part numbers equating to over 158 million parts. This inventory gives our customers' options when buying standard and specialty hardware. If we do not have exactly what you need, we may have an equivalent part close enough in size, thickness, material or plating to meet your needs. All Seastrom standard parts are listed online with their price, stock and delivery for ease of use. Online ordering is also available. If a pricing is not available an email quote request is provided for our customer's convenience.

Find all this and more at www.seastrom-mfg.com.

Standard Part Modifications

Seastrom's large tool and die department enables us to easily modify our standard tooling to accommodate basic standard part modifications. This enables our customers to avoid costly custom tooling when their specification is close to one of our standards (ie. modifications in length, width, number of holes, etc.)

Custom Products

Custom products are a specialty of Seastrom Manufacturing. As a full service manufacturer and we can help our customers save time and money on a custom product beginning with the design process. Seastrom has multiple methods of manufacturing (ie. Stamping, CNC, Screw Machine, Four Slide) which translates into a vast amount of knowledge that our customers can draw upon. Our in-house engineering departments can work with our customers' engineers to recommend manufacturing methods, materials, tolerances, and configurations that are possible in each method of manufacturing. All our engineering department requires are quantities, target pricing and the ability to view the whole assembly. If you don't have the capability to make a schematic, they can do that for you, as well as reverse-engineer an existing part that you don't have dimensions for. As the project develops, quotes can be given on the parts to make sure you stay within your price point. Projects can consist of only one part, or as many as you require.

www.seastrom-mfg.com

www.seastromwashers.com



Custom Manufacturing Capabilities

Stamping

- High precision
- .001 to .125 thickness
- Up to 6" width
- Prototype parts
- Short & Long run capabilities
- Washer sizes from .05 to 4" OD in any .005 increment
- Metallic & Non-metallic materials



CNC Machining

- High precision
- 4 Axis
- Up to 40" x 60" milling bed capability
- 10" - 12" turning capability
- Most all machinable metals & non-metals



Multi-spindle Screw Machining

- High precision
- Prototype
- Short and Long run capabilities
- Most all machinable metals & non-metals

Secondary Operations & Assembly

- FOD (Foreign Object Detection)
- Wide variety of services to fulfill our customers needs (ie. tapping, riveting, etc.)
- Complete product assembly

Special Packaging

- Packaging to customer specifications
- Bar code
- Custom labeling
- Special quantity pack
- Skin pack





Value Added Services

Engineering

Seastrom's has a fully staffed engineering department to help with the design process of a new product. We have expertise in multiple methods of manufacturing which translates into a large amount of options when deciding the best and most cost effective process to create your custom product. We specialize in working closely with our customer's engineers to produce the best part for their specification.



Tooling Department

Seastrom is able to stand behind our huge offering of stock standard products due to our vast inventory of tooling. This tooling allows us to immediately manufacture their catalog products. We, also, design and make custom dies and tooling to our customer's product specifications. Seastrom's rejection rate averages less than one percent, giving them the ability to deliver virtually defect free product to their customers.

Quality Control

Our Quality Control department utilizes state of the art equipment to ensure that all Seastrom products meet all specifications. Quality Control maintains complete lot traceability, offers material and product testing, process certification and first article qualification and inspection. PPAP and AS9100 procedures are, also, followed. Every job that runs through Seastrom's plant is shipped only after complete final product inspection has been performed.

Customer Service

All orders start with Customer Service. Seastrom takes pride in their friendly and courteous staff available to take your order or answer your questions. If we don't know the answer we will find out for you.





Stock Standard Products

Round Flat Washers



Non-Metallic:
5600, 5602, 5606,
5610-5624

Metallic:
5700 - 5720

Spring Washers: Belleville, Wave, Crescent, Dome, Single Wave



5808 - 09



5805 - 06



5803 - 04



5810



5807

Shoulder Washers



5603-05, 5607-09

Lockwashers: External, Internal, Helical



5856 - 57



5854 - 55



5850 - 51

Countersunk Washers



5700 - Style 1



5700 - Style 2



5700 - Style 3

Retention Washers



2715



2714

Split Washers



5627 - Style 1



5627 - Style 2

Finishing Washers



2725

Retaining Washers



5758



5759

Centering Washers



5760 - Style 1



5760 - Style 2



5760 - Style 3

Terminal Cup Washers



5737

Tab Lock Washers



5748



5749



5745 - Style 1



5745 - Style 2

Internal Tab Washers



5739



5746



5747

Stock Standard Products

External Tab Washers



5741

5742 - Style 1

5742 - Style 2

5742 - Style 3

Internal & External Tab Washers



5744

5743

Formed Key Washers



5740

5739

Internal & External Notch Washers



5750

5751

5754

5753

Miscellaneous External Shaped Washers

"C" Shaped



5626

"D" Shaped



5734

Rectangular



5729

Square



5733

Clipped



5738

Miscellaneous Internal Shaped Hole Washers

Hexagonal



5732

"D" Shaped



5736

Square



5730

Flattened Shaft



5731

Spacers



5690 - 92

Retaining Rings



2725 - 26



2727 - 28



2829 - 30

Expansion Plugs



5790

5791

O-Rings



5670 - 73



Stock Standard Products

Spring Clips (Component, Fuse)



4521 - 4526



4511, 4549-4551,
4576



4513



4508 - 4510



4527 - 4530, 4558



4519



4561



4518



4537



4500



4543



4563



4515, 4517



4514



4506



4552



4571



4562



4538 - 4540



4502



4545



4555



4556



4572



4547



4505



4565



4573



4557



4504



4566



4533



4534



4535



4541



4554



4520



4503, 4512



4570



4569



4501



4507

Stock Standard Products

Component Clamps



2811 - Style 1 2811 - Style 2 2811 - Style 3 2811 - Style 4 2811 - Style 5

Hold Down Clamp



2810

Retaining Clamps



5310 5311

Cord Clamp (Strain Relief)



5357 5356 5357 5355

Cable Clamps



5300 - Style 1 5300 - Style 2

Double Cable Clamps



5301 - Style 1 5301 - Style 2

Tube Clamps



5315

Loop Clamps



5317 5316

"J" Clips



5318

Angle Brackets



4928 - Style 1 4928 - Style 2 4929 - Style 1 4929 - Style 2

Flat Brackets



4930 4931

Transformer Strap



4810

Terminal Board Bracket



4925

Mounting Bracket



5950



Stock Standard Products

Solder Lugs



5400



5401



5402



5403



5404



5405-1



5405-2



5405-3



5405-4



5406



5407



5408



5409



5411



5413



5414



5415



5416



5421



5424



5425



5428



5429



5432



5433



5434



5436



5437



5438



5439



5440



5441



5442



5443



5444



5445



5446



5447



4550



4551



4552



5453



5454



5455



5456



5457



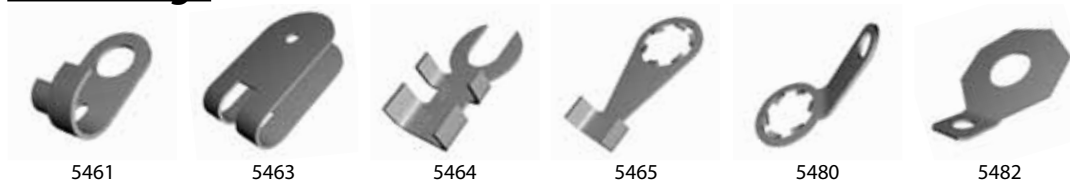
5458



5460

Stock Standard Products

Solder Lugs



Flexible Grounding Strap



Double Washers/Ground Straps



Jumpers



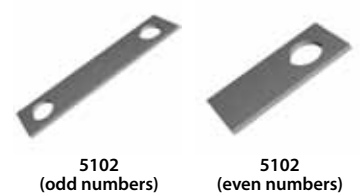
Bus Bars



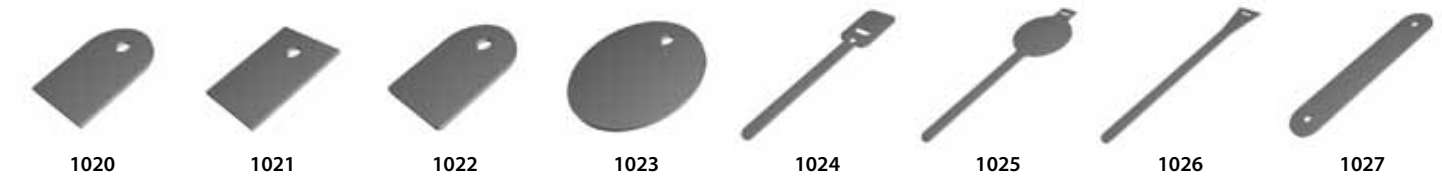
Terminal Strip



Insulating Strips



Tags



S-Hooks





Stock Standard Products

Military Standards: MS, NAS, M, AN, USAF

04,	MS17840	MS35438
347,	MS21258	MS35443
101 - 04,	MS21306	MS35338
166 - 68,	MS21314 -15	MS35648
176,	MS21332	MS35650
228 - 31,	MS22048	MS35691
276,	MS25081 - 82	MS39085
320 - 21	MS25226 - 27	MS45904
353 - 54	MS25436	MS51092
365 - 67	MS25440	MS51412
379 - 80	MS27111	MS51496
394 - 95	MS27183	MS51535 - 37
549	MS27309	MS51560
551 - 52	MS29524	MS51857
581 - 32	MS29532	MS51859
592 - 9603	MS35140	MS51867
4151	MS35207	MS51936
5795	MS35333	MS51956
6212 - 13	MS35430 - 31	MS75009
7186	MS35434	MS75044 - 45
7188	MS35436	MS77066 - 74, MS90134, MS90335, MS91124, MS91608, MS91820
7840		

Hiram Jones: Pins, Terminals & Connectors

Terminal Pin	Uninsulated Terminals
Terminal Stud	MIL-T-55155 Non-Insulated Terminals
Terminal Base	Insulators
Terminal Spacer	Insulated Terminals
Terminal Standoff	Teflon Insulated Press-Type Terminals
Bifurcated Terminals	Teflon Insulated Assembled Standoff
Swage Type Terminals	Teflon Insulated Test Jack and Test Point
Crimp and Ground Terminals	Teflon Insulated Assembled Feed Thru Terminals

5600 - 5712

5600 - 5712

5600 - 5712



Examples of Seastrom Custom Parts:



Purely Custom Fit Cycle:
Complete design thru assembly



Seastrom's Certifications

Seastrom takes pride in its efforts to comply with all current quality, employment and environmental certifications.

Our customers are guaranteed our products meet the following:

Federal Supply Code:
86928

Small Business
Drug Free Workplace



DFARS
Compliant



PPAP

REACH



www.seastrom-mfg.com

www.seastromwashers.com



Shoshone Falls in the Snake River Canyon
Twin Falls, Idaho



Seastrom Manufacturing Co., Inc.
456 Seastrom Street
Twin Falls, Idaho 83301

Toll Free 800-634-2356 Fax 208-734-7222

www.seastromwashers.com www.seastromwashers.com